



Indiana Economic Growth Regions

February, 2017

EGR overview

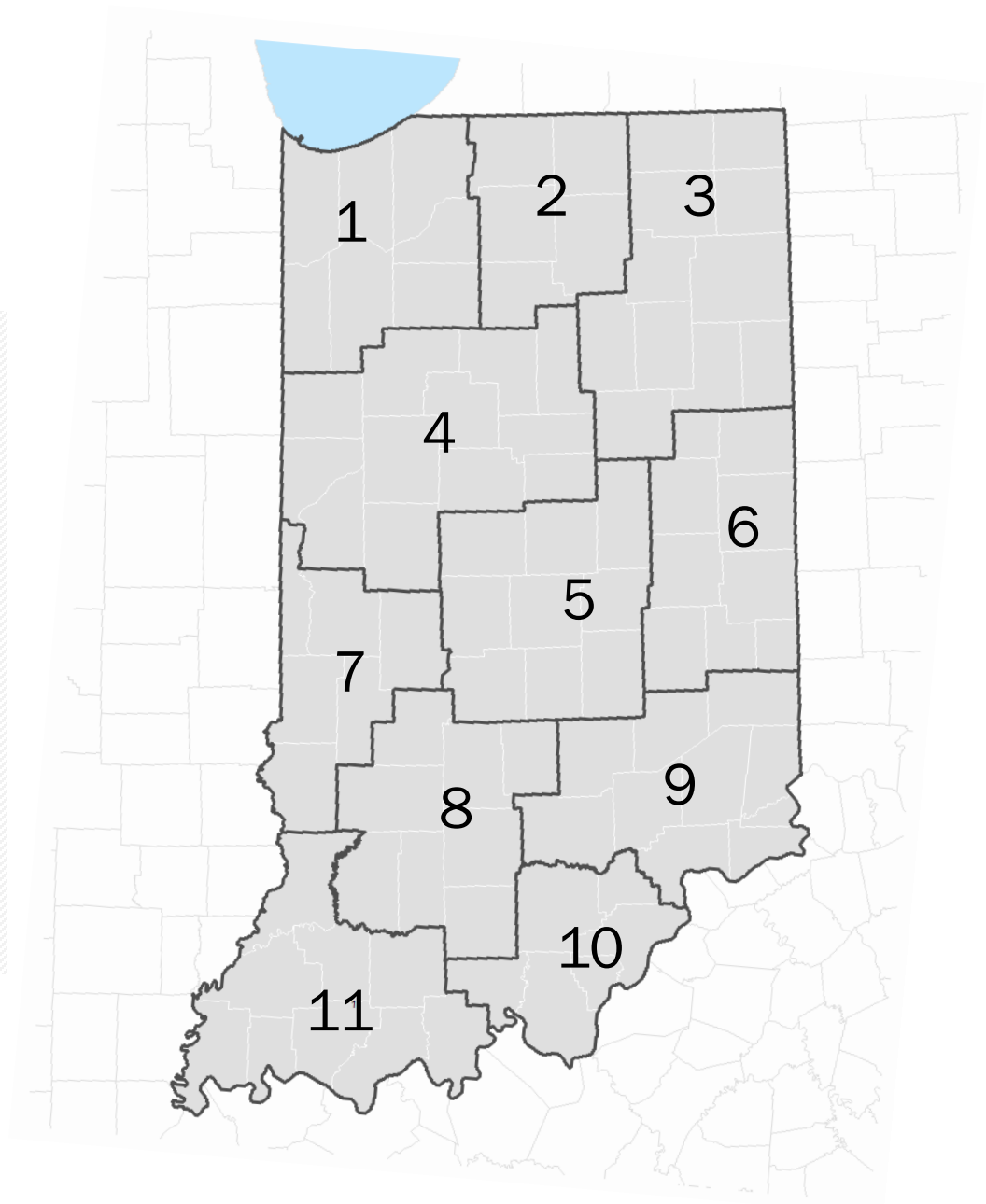
[Map](#)

[Description](#)

Overview

Indiana's EGR

- Region 1 (7 counties)
- Region 2 (5 counties)
- Region 3 (11 counties)
- Region 4 (12 counties)
- Region 5 (9 counties)
- Region 6 (9 counties)
- Region 7 (6 counties)
- Region 8 (8 counties)
- Region 9 (10 counties)
- Region 10 (6 counties)
- Region 11 (9 counties)



Overview

Counties in each region

Region 1	Region 2	Region 3	Region 4	Region 5	Region 6	Region 7	Region 8	Region 9	Region 10	Region 11
Jasper	Elkhart	Adams	Benton	Boone	Blackford	Clay	Brown	Bartholomew	Clark	Dubois
La Porte	Fulton	Allen	Carroll	Hamilton	Delaware	Parke	Daviess	Dearborn	Crawford	Gibson
Lake	Kosciusko	De Kalb	Cass	Hancock	Fayette	Putnam	Greene	Decatur	Floyd	Knox
Newton	Marshall	Grant	Clinton	Hendricks	Henry	Sullivan	Lawrence	Franklin	Harrison	Perry
Porter	St. Joseph	Huntington	Fountain	Johnson	Jay	Vermillion	Martin	Jackson	Scott	Pike
Pulaski		Lagrange	Howard	Madison	Randolph	Vigo	Monroe	Jefferson	Washington	Posey
Starke		Noble	Miami	Marion	Rush		Orange	Jennings		Spencer
		Steuben	Montgomery	Morgan	Union		Owen	Ohio		Vanderburgh
		Wabash	Tippecanoe	Shelby	Wayne			Ripley		Warrick
		Wells	Tipton					Switzerland		
		Whitley	Warren							
			White							

Shift-Share Analysis of Agribusiness Cluster: EGR Regions, IN

Agribusiness and Food Processing Cluster

EGR	LQ 2015	Jobs 2015	National Trend, 2009-2015	Industry Trend, 2009-2015	Cumulative Expected Growth	Actual Job Growth, 2009-2015	Regional Performance, 2009-2015
			A	B	C=A+B	D	D-C
EGR 1	0.91	10,541	902	-382	520	225	-295
EGR 2	1.02	11,482	923	-391	532	925	↑ 394
EGR 3	1.55	20,123	1,583	-671	912	2,016	↑ 1,104
EGR 4	2.51	18,953	1,598	-677	920	681	-239
EGR 5	0.60	21,133	1,678	-711	967	1,940	↑ 974
EGR 6	1.84	8,383	757	-321	436	-281	-717
EGR 7	1.44	4,493	384	-163	221	101	-120
EGR 8	1.61	7,490	576	-244	332	901	↑ 570
EGR 9	1.70	8,744	767	-325	442	-32	-474
EGR 10	1.52	6,217	552	-234	318	-99	-417
EGR 11	1.50	11,465	865	-367	498	1,573	↑ 1,075

Note: Upward arrow (↑) indicates regional competitiveness (if LQ >=1 and Regional Performance has a positive value)

overview

Source: EMSI Class of Worker 2016.4 (QCEW, non-QCEW, self-employed and extended proprietors).

Shift-Share Analysis of Agribusiness Cluster: EGR Regions, IN

Forest and Wood Products Cluster

EGR	LQ 2015	Jobs 2015	National Trend, 2009-2015	Industry Trend, 2009-2015	Cumulative Expected Growth	Actual Job Growth, 2009-2015	Regional Performance, 2009-2015
			A	B	C=A+B	D	D-C
EGR 1	0.91	5,300	430	-302	128	383	↑ 254
EGR 2	2.71	15,204	1,071	-752	319	2,951	↑ 2,632
EGR 3	1.95	12,619	855	-600	255	2,845	↑ 2,591
EGR 4	1.16	4,396	409	-287	122	-284	-406
EGR 5	0.76	13,338	1,167	-819	348	-12	-360
EGR 6	1.53	3,489	306	-215	91	-13	-105
EGR 7	1.48	2,309	168	-118	50	390	↑ 340
EGR 8	1.62	3,760	295	-207	88	391	↑ 303
EGR 9	1.61	4,143	392	-275	117	-341	-458
EGR 10	2.57	5,279	418	-293	124	504	↑ 379
EGR 11	2.84	10,862	946	-664	282	42	-240

Note: Upward arrow (↑) indicates regional competitiveness (if LQ >=1 and Regional Performance has a positive value)

overview

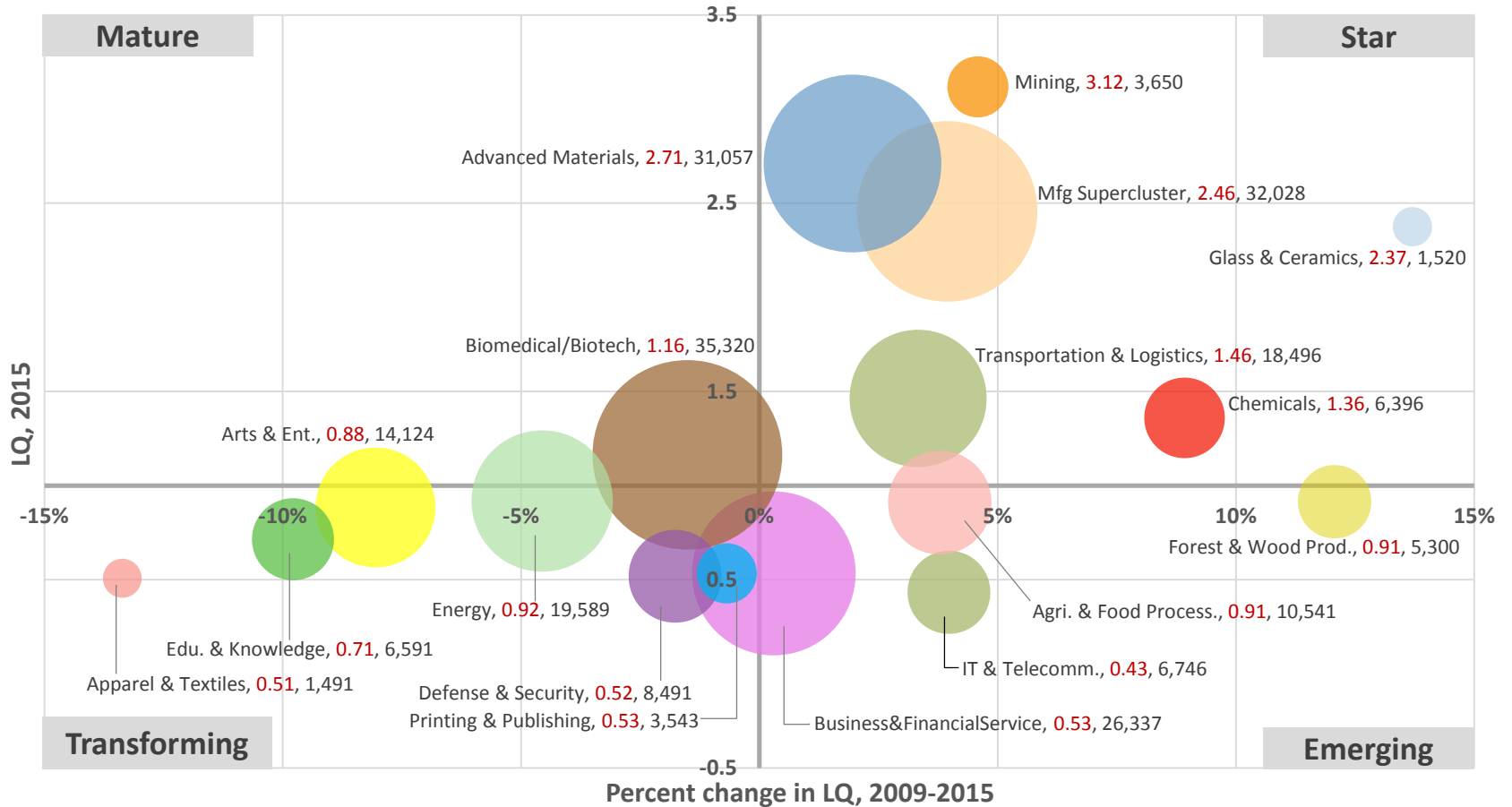
Source: EMSI Class of Worker 2016.4 (QCEW, non-QCEW, self-employed and extended proprietors).

Economic Growth Region 1

Industry cluster analysis

Industry cluster analysis

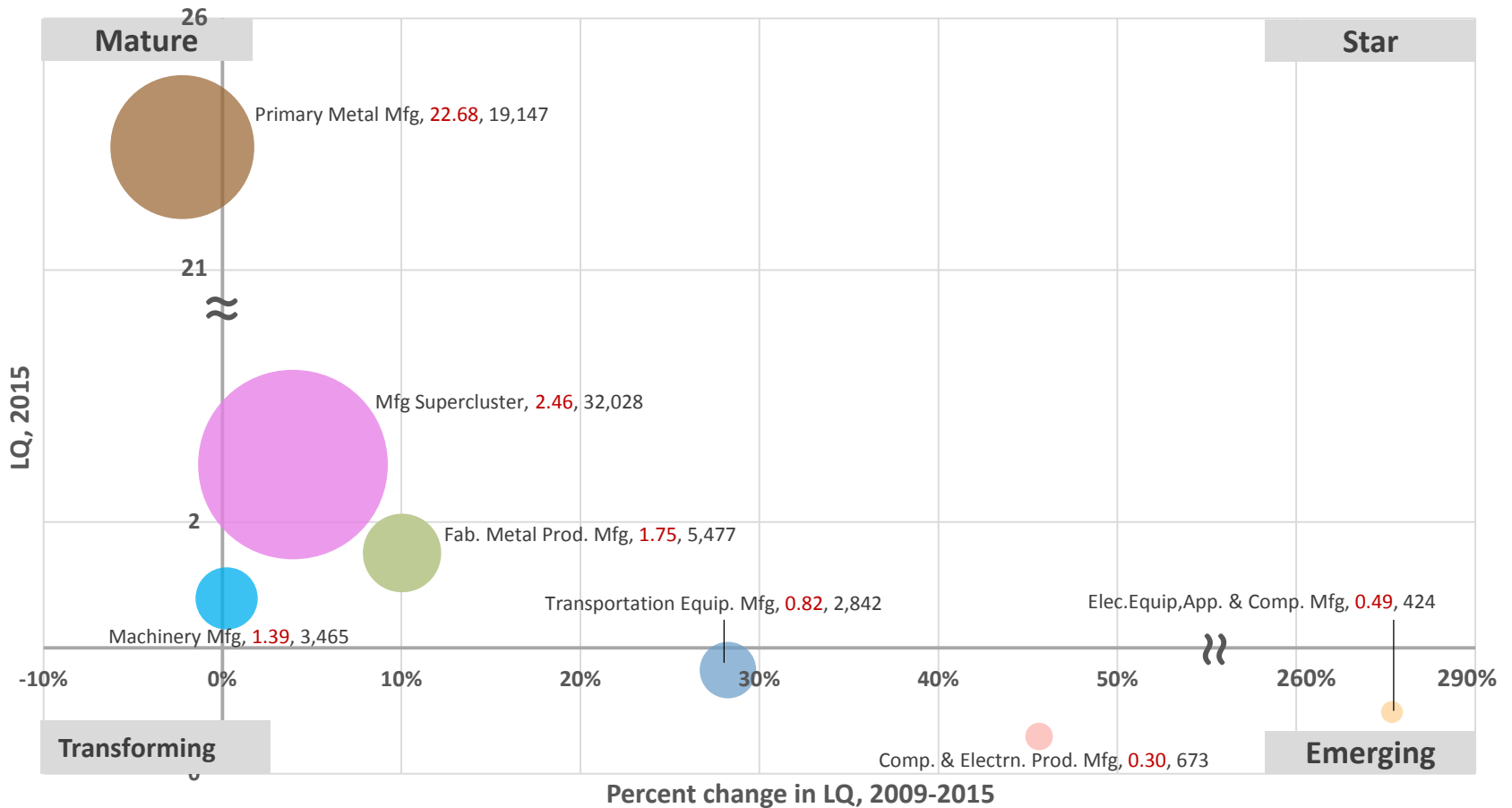
Industry cluster bubble chart



Note: Label includes cluster name, LQ 2015, and Employment 2015; NAICS 2012 definitions.

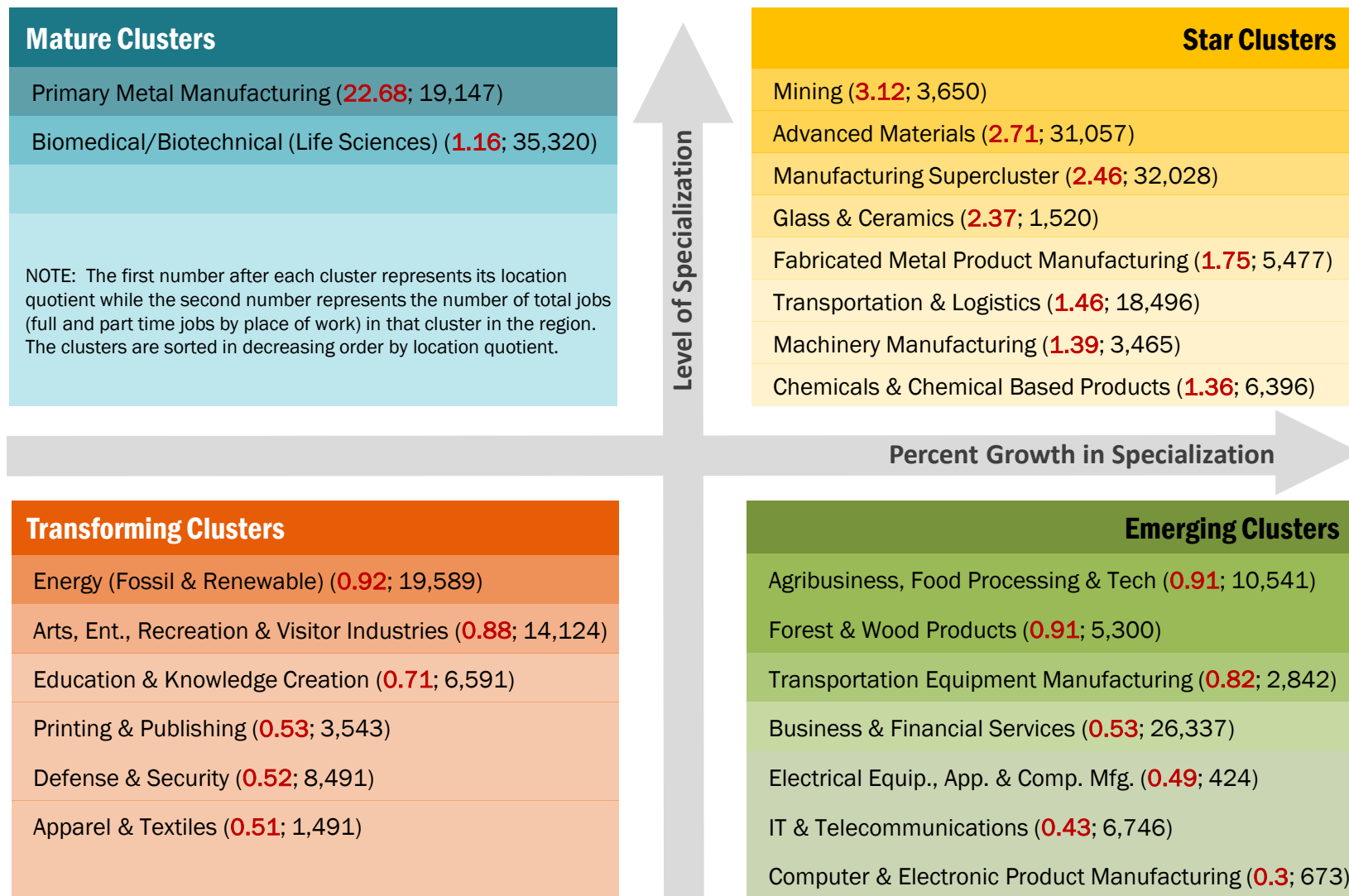
Industry cluster analysis

Manufacturing sub-cluster bubble chart



Note: Label includes cluster name, LQ 2015, and Employment 2015; NAICS 2012 definitions.

Industry cluster analysis



EGR 1

Industry cluster analysis

Bubble chart interpretation

Mature Industries

Two industry clusters in the Indiana Economic Growth Region 1 (EGR 1) are in the Maturing stage: Primary Metal Manufacturing; and Biomedical/Biotechnical (Life Sciences). These industries are relatively concentrated, but their growth is trending downward. It is worth noting, however, that the Indiana EGR 1 may find it worthwhile to invest in efforts to shore up the concentration of these industries.

Transforming Industries

Transforming clusters capture the mix of industries that are experiencing relative decline and limited export capability. In the EGR 1, Energy (Fossil & Renewable); Arts, Entertainment, Recreation & Visitor Industries; Education & Knowledge Creation Printing & Publishing; Defense & Security; and Apparel & Textiles clusters. Any amount of growth in these industries would require relatively large investments.

Star Industries

Star industry clusters are highly concentrated, exporting and still experiencing growth in the region. The most highly concentrated of the Star industry clusters in the EGR 1 is Mining. Its location quotient is 3.12, indicating that the cluster is 3 times more concentrated in the region compared to the U.S. The other strong clusters in the region are Advanced Materials; Manufacturing Supercluster; Glass & Ceramics; and four others.

Emerging Industries

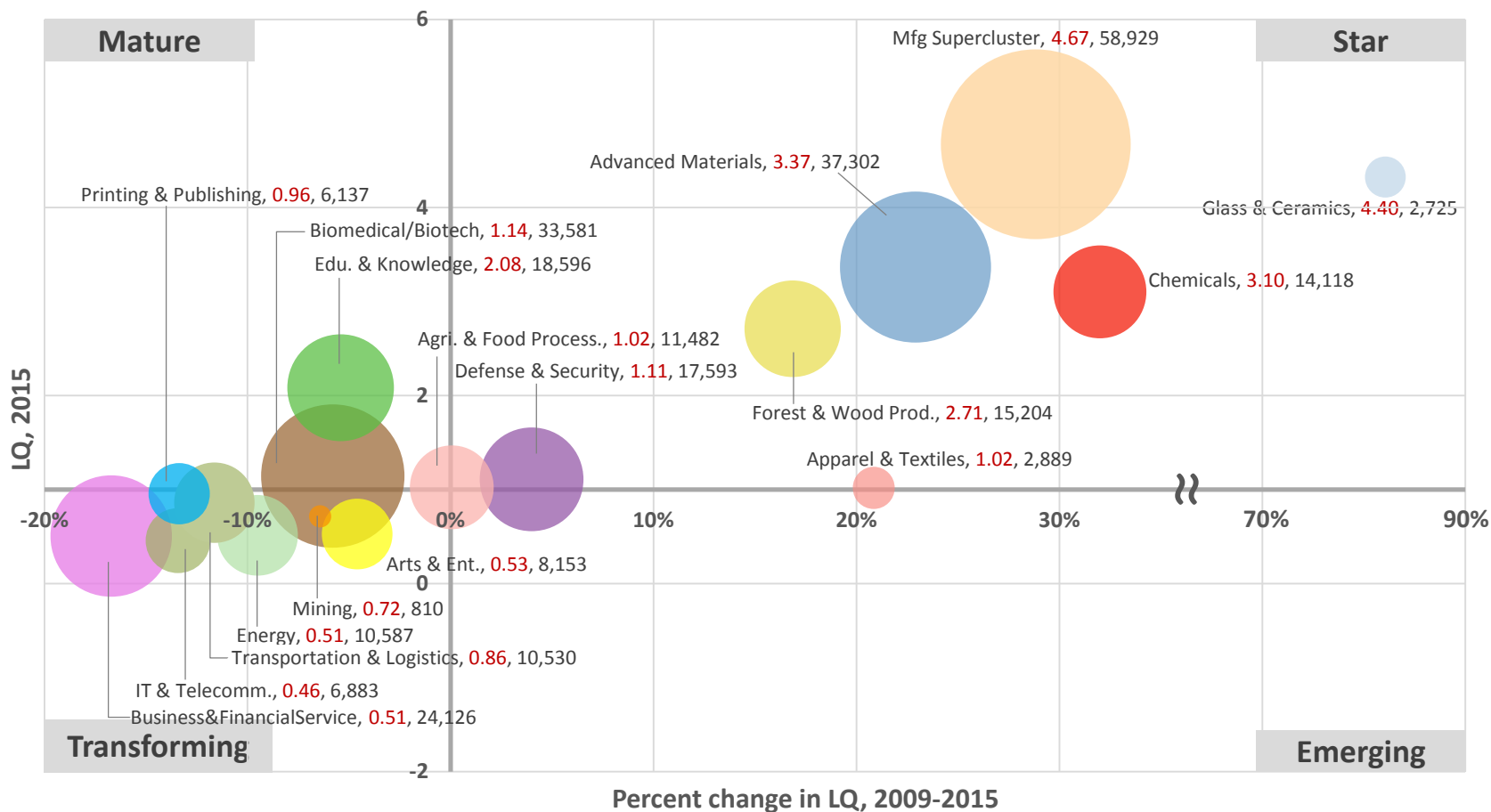
Industry clusters that may be poised for future growth are classified as “Emerging.” There are seven Emerging clusters in the EGR 1: Agribusiness, Food Processing & Technology; Forest & Wood Products; Transportation Equipment Manufacturing; Business & Financial Services; Electrical Equip., Appliance & Component Mfg.; Information Technology & Telecommunications; and Computer & Electronic Product Manufacturing .

Economic Growth Region 2

Industry cluster analysis

Industry cluster analysis

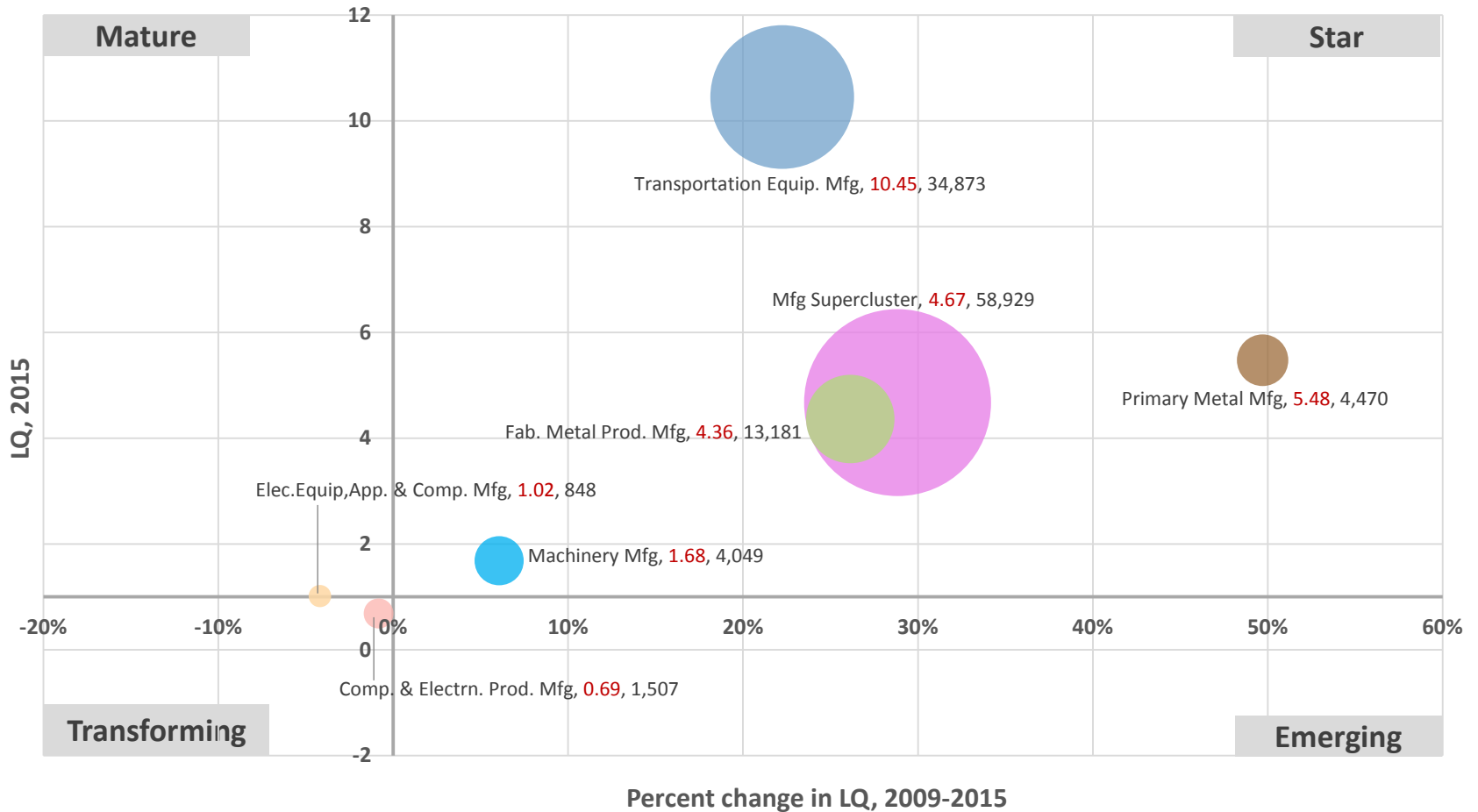
Industry cluster bubble chart



Note: Label includes cluster name, LQ 2015, and Employment 2015; NAICS 2012 definitions.

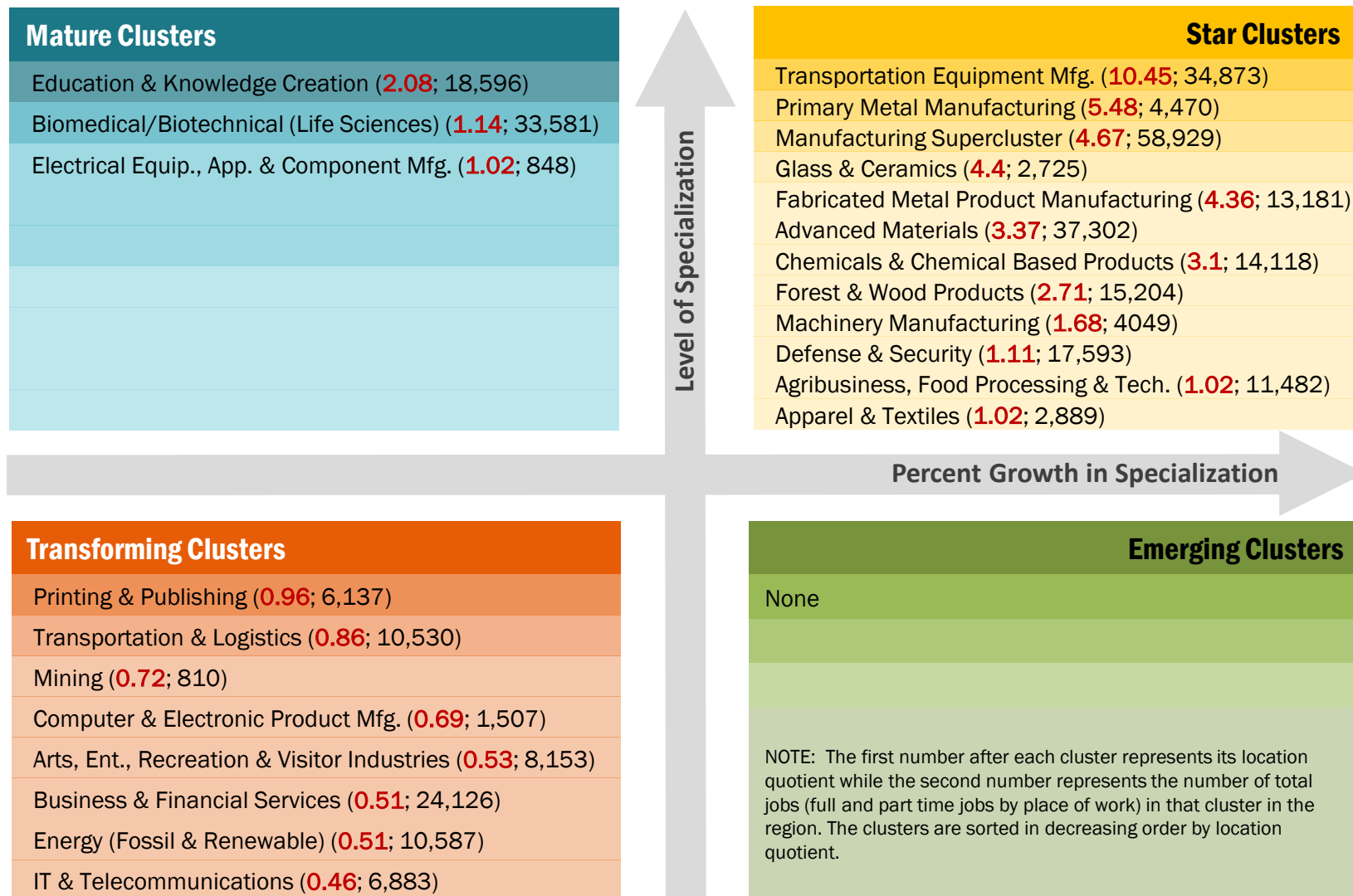
Industry cluster analysis

Manufacturing Supercluster bubble chart



Note: Label includes cluster name, LQ 2015, and Employment 2015; NAICS 2012 definitions.

Industry cluster analysis



Industry and occupation

Bubble chart interpretation

Mature Industries

Three industry clusters in the Indiana Economic Growth Region 2 (EGR 2) are in the Maturing stage: Education & Knowledge Creation; Biomedical/Biotechnical (Life Sciences); and Electrical Equip., App. & Component Mfg. These industries are relatively concentrated, but their growth is trending downward. It is worth noting, however, that the EGR 2 may find it worthwhile to invest in efforts to shore up the concentration of these industries.

Transforming Industries

Transforming clusters capture the mix of industries that are experiencing relative decline and limited export capability. In the EGR 2, Printing & Publishing; Transportation & Logistics; Mining; Computer & Electronic Product Manufacturing; Arts, Ent., Rec. & Visitor Industries; Business & Financial Services; Energy; and IT & Telecommunications are all Transforming clusters. Any amount of growth in these industries would require relatively large investments.

Star Industries

Star industry clusters are highly concentrated, exporting and still experiencing growth in the region. The most highly concentrated of the Star industry clusters in the EGR 2 is Transportation Equipment Mfg.. Its location quotient is 10.45, indicating that the cluster is 10 times more concentrated in the region compared to the U.S. The other strong clusters in the region are Primary Metal Mfg.; Manufacturing Supercluster; Glass & Ceramics; Fabricated Metal Product Mfg.; and seven others.

Emerging Industries

Industry clusters that may be poised for future growth are classified as “Emerging.” There are no Emerging clusters in the EGR 2.



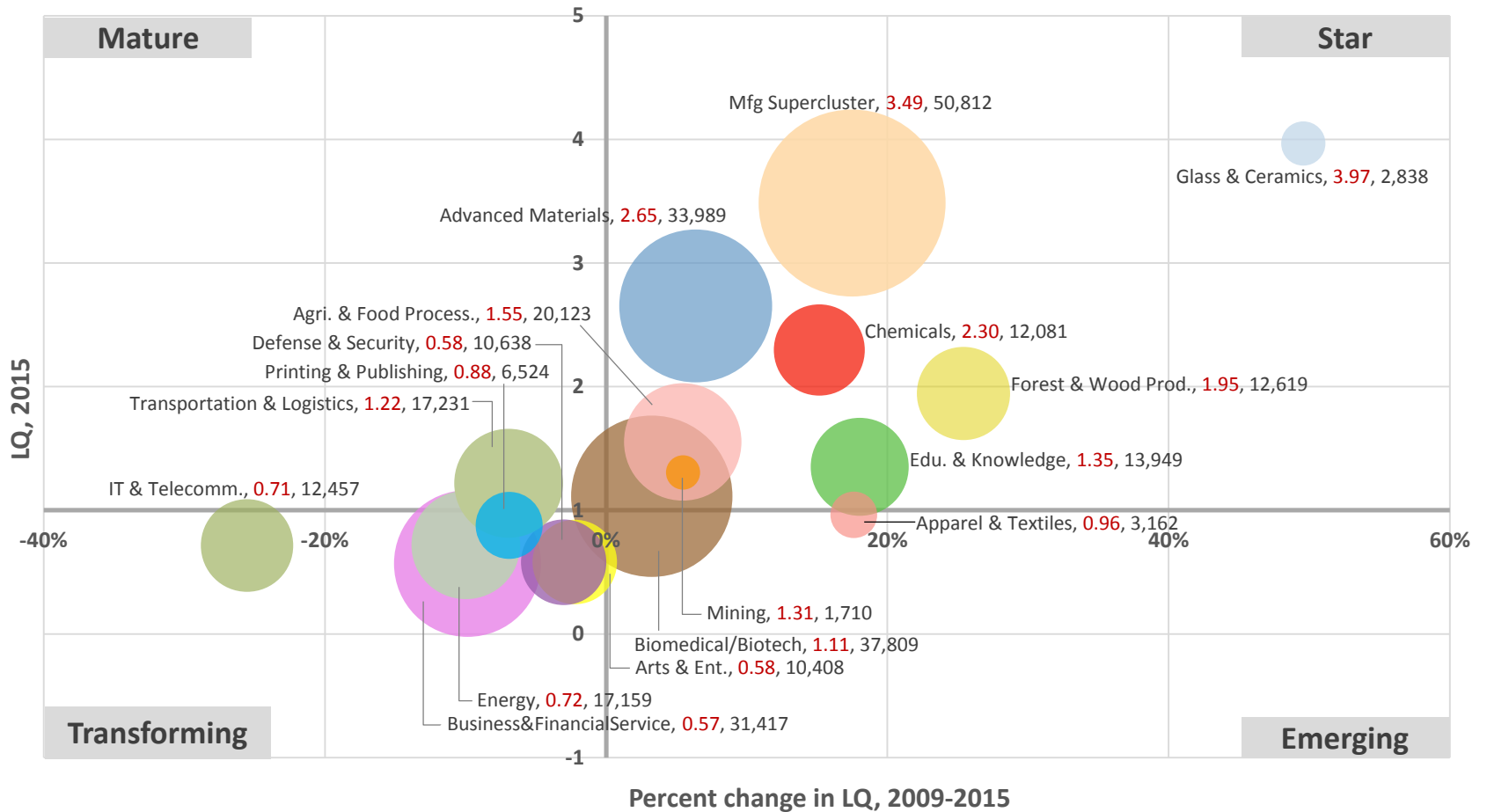
EGR 2

Economic Growth Region 3

Industry cluster analysis

Industry cluster analysis

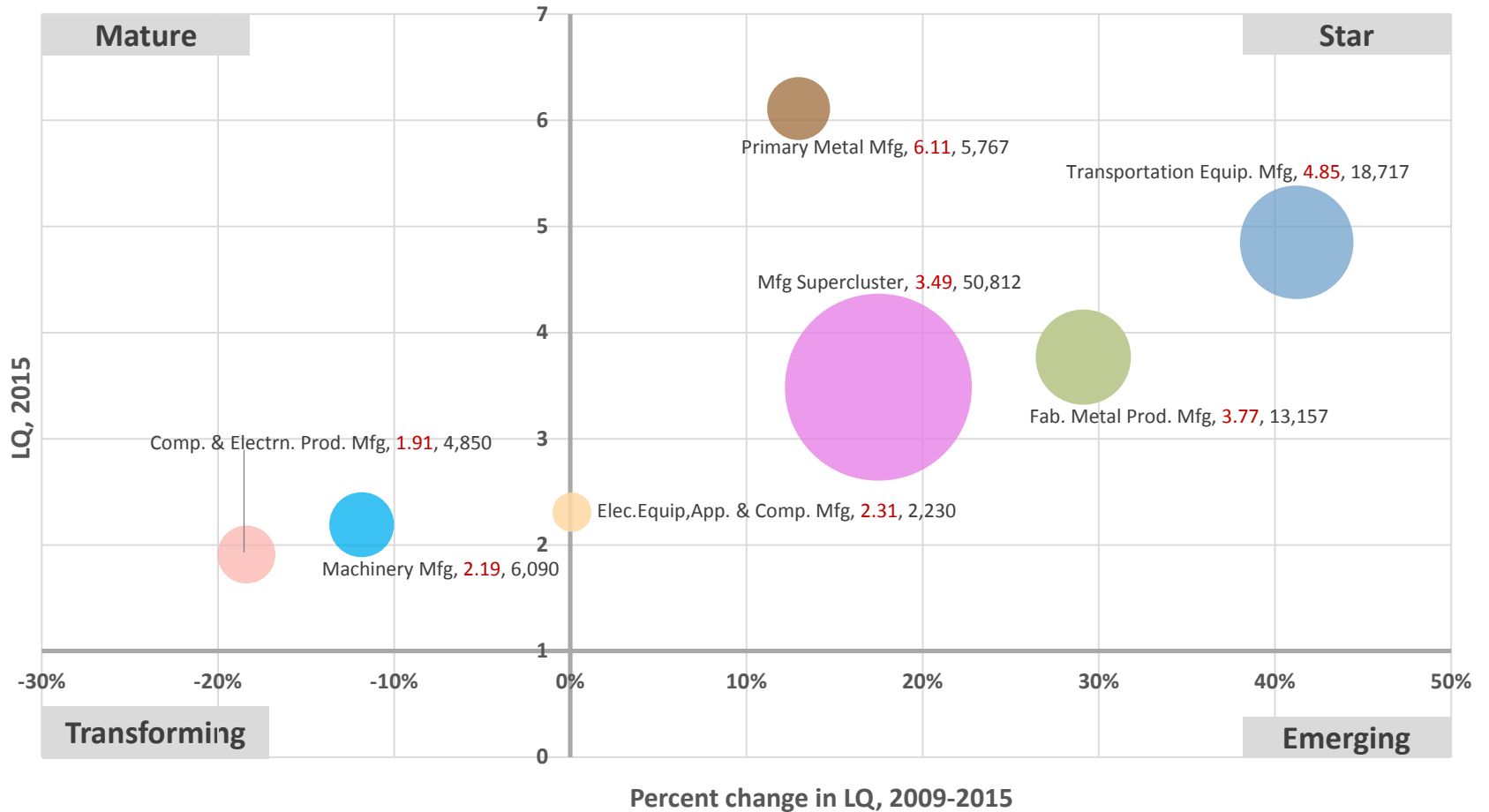
Industry cluster bubble chart



Note: Label includes cluster name, LQ 2015, and Employment 2015; NAICS 2012 definitions.

Industry cluster analysis

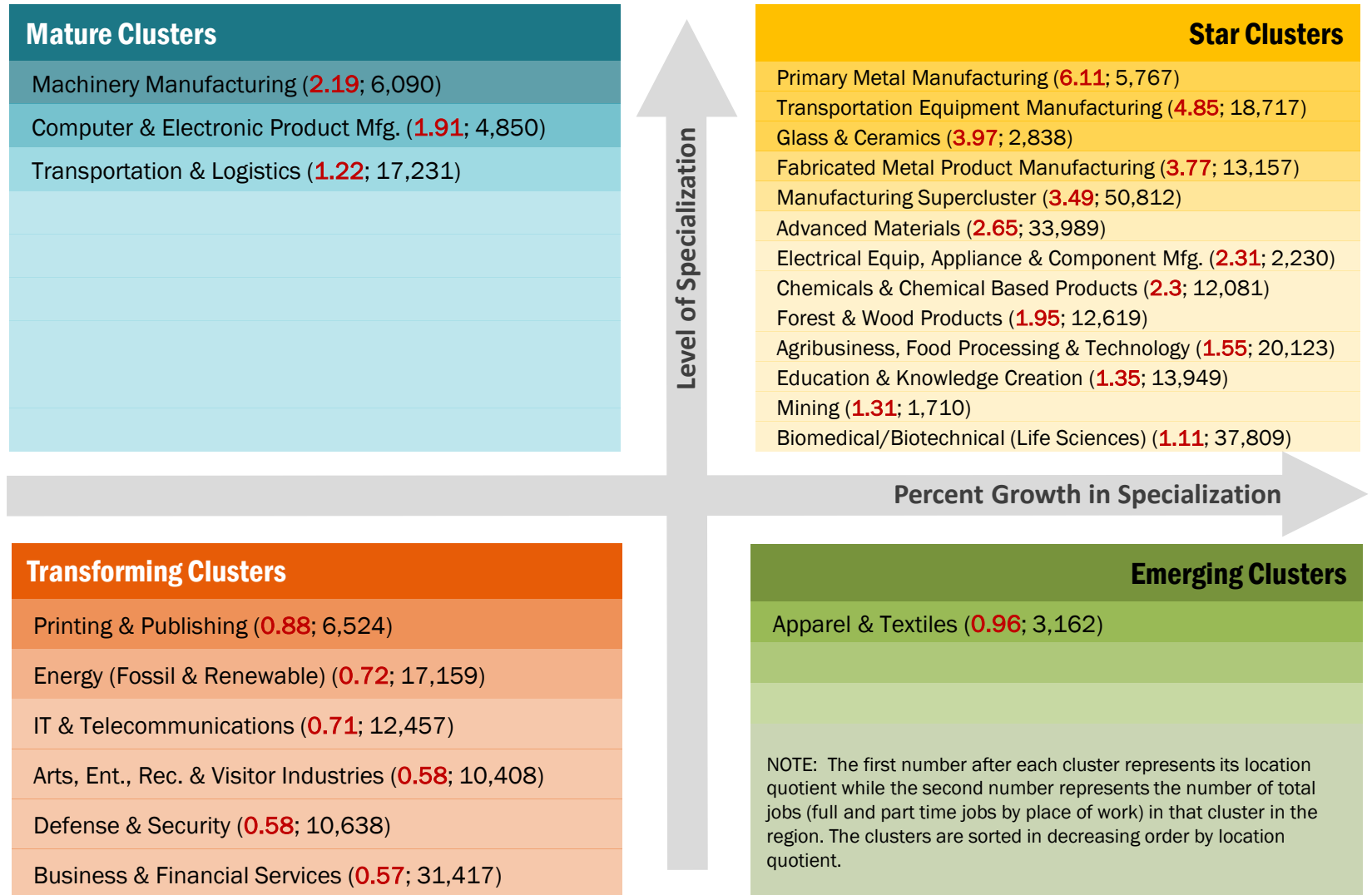
Manufacturing Supercluster bubble chart



Note: Label includes cluster name, LQ 2015, and Employment 2015; NAICS 2012 definitions.

EGR 3

Industry cluster analysis



Industry and occupation

Bubble chart interpretation

Mature Industries

Three industry clusters in the Indiana Economic Growth Region 3 (EGR 3) are in the Maturing stage: Machinery Manufacturing; Computer & Electronic Product Manufacturing; and Transportation & Logistics. These industries are relatively concentrated, but their growth is trending downward. It is worth noting, however, that the EGR 3 may find it worthwhile to invest in efforts to shore up the concentration of these industries.

Transforming Industries

Transforming clusters capture the mix of industries that are experiencing relative decline and limited export capability. In the EGR 3, Printing & Publishing; Energy (Fossil & Renewable); Information Technology & Telecommunications; Arts, Entertainment, Recreation & Visitor Industries; Defense & Security; and Business & Financial Services are all Transforming clusters. Any amount of growth in these industries would require relatively large investments.

Star Industries

Star industry clusters are highly concentrated, exporting and still experiencing growth in the region. The most highly concentrated of the Star industry clusters in the EGR 3 is Primary Metal Manufacturing. Its location quotient is 6.11, indicating that the cluster is 6 times more concentrated in the region compared to the U.S. The other strong clusters in the region are Transportation Equipment Mfg.; Glass & Ceramics; Fabricated Metal Product Mfg.; and nine others.

Emerging Industries

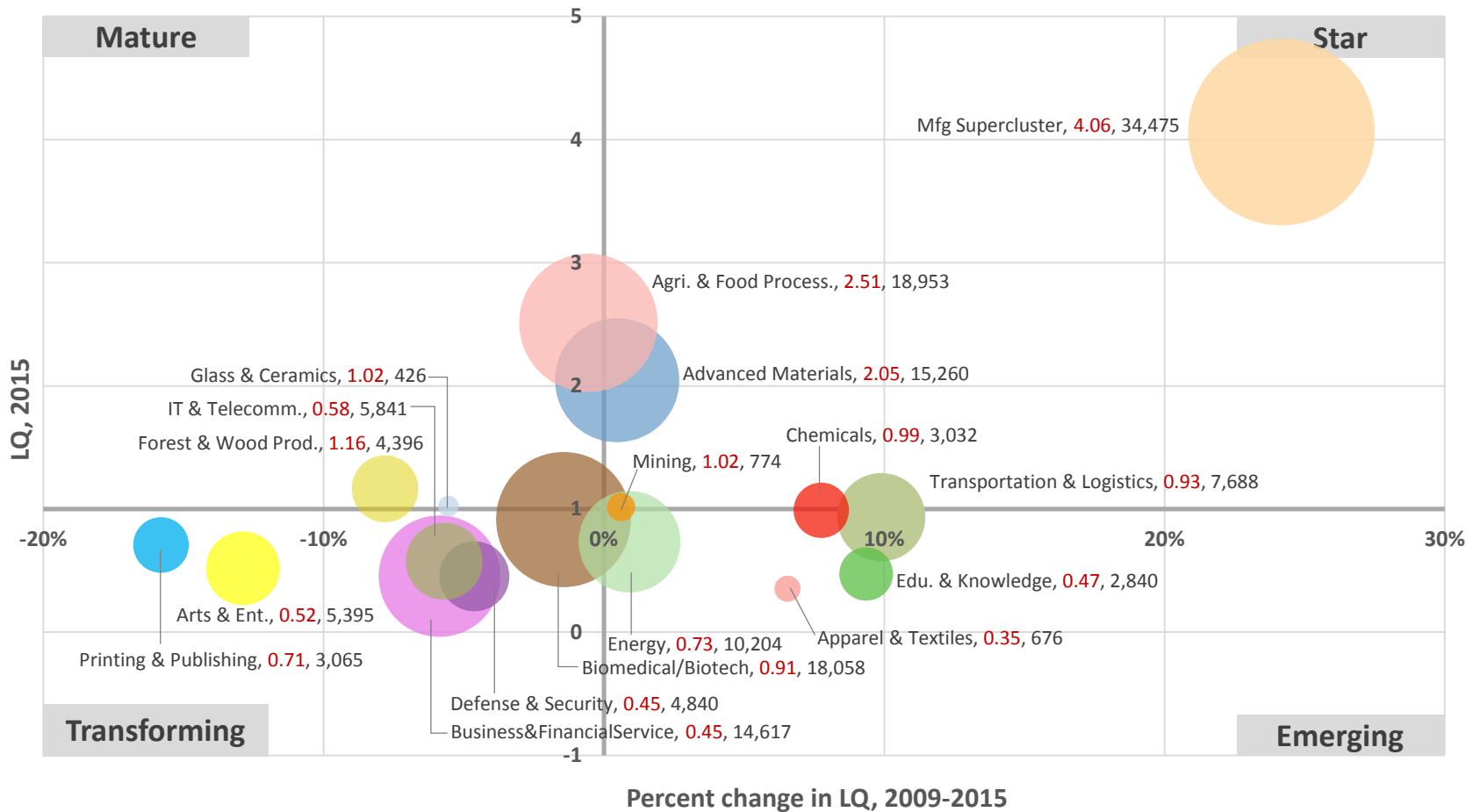
Industry clusters that may be poised for future growth are classified as “Emerging.” There is one Emerging cluster in the EGR 3: Apparel & Textiles.

Economic Growth Region 4

Industry cluster analysis

Industry cluster analysis

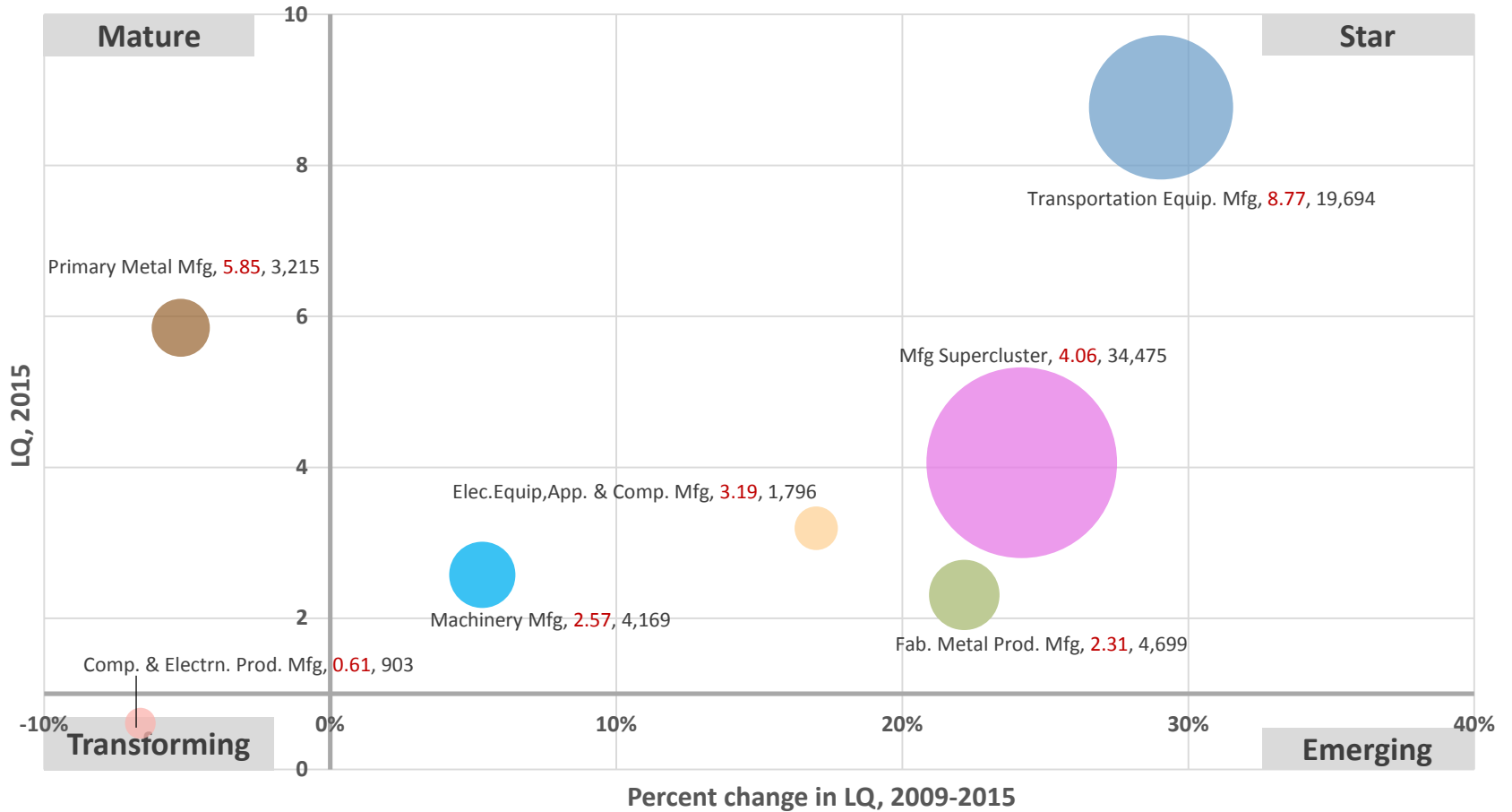
Industry cluster bubble chart



Note: Label includes cluster name, LQ 2015, and Employment 2015; NAICS 2012 definitions.

Industry cluster analysis

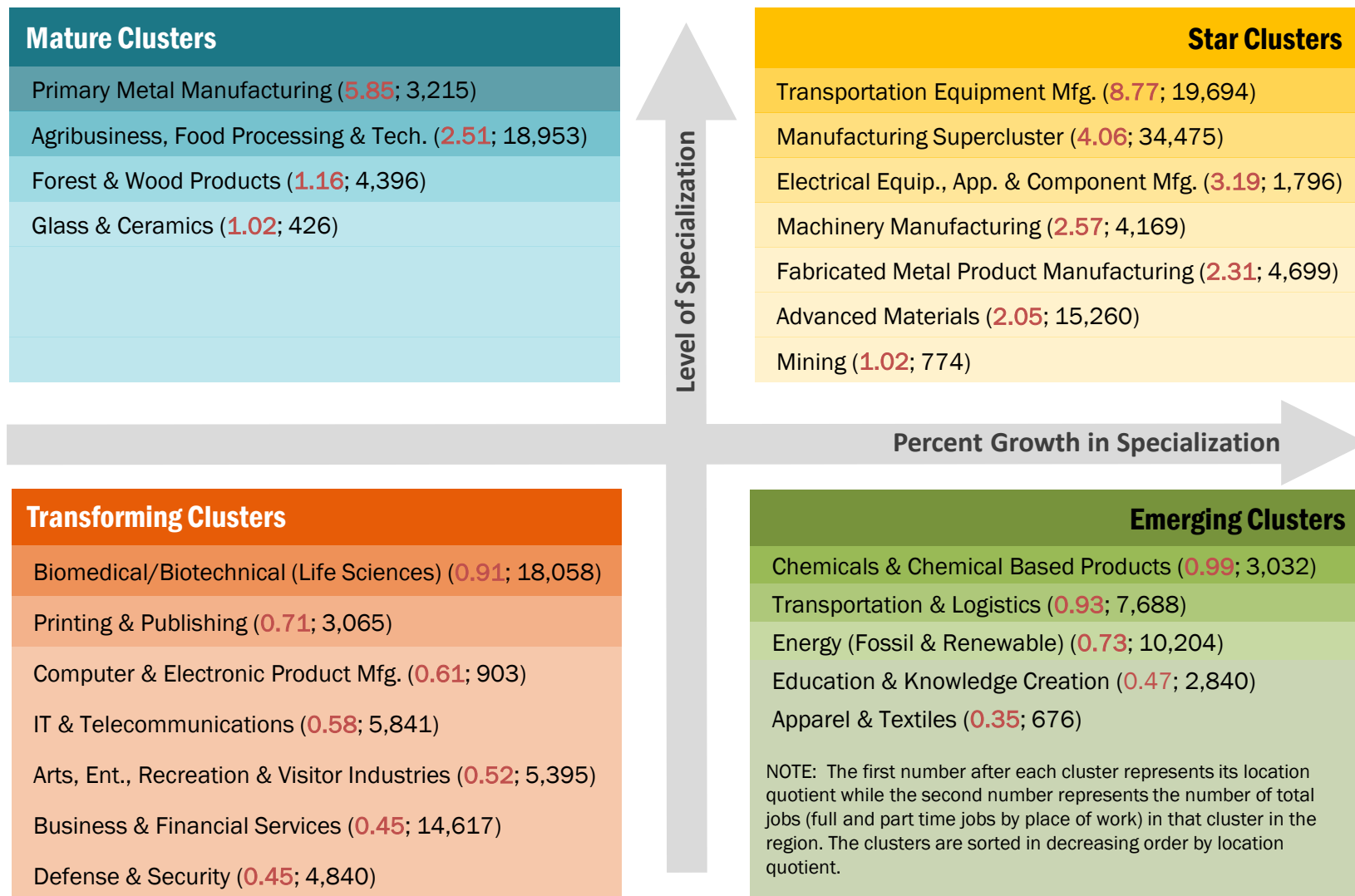
Manufacturing sub-cluster bubble chart



Note: Label includes cluster name, LQ 2015, and Employment 2015; NAICS 2012 definitions.

EGR 4

Industry cluster analysis



Industry cluster analysis

Bubble chart interpretation

Mature Industries

Four industry clusters in the Indiana Economic Growth Region 4 (EGR 4) are in the Maturing stage: Primary Metal Mfg.; Agribusiness, Food Processing, & Tech.; Forest & Wood Prod.; and Glass & Ceramics. These industries are relatively concentrated, but their growth is trending downward. It is worth noting, however, that the Indiana EGR 4 may find it worthwhile to invest in efforts to shore up the concentration of these industries.

Transforming Industries

Transforming clusters capture the mix of industries that are experiencing relative decline and limited export capability. In the EGR 4, Biomedical; Printing & Publishing; Computer & Electronic Prod. Mfg.; IT & Telecom; Arts, Ent., Rec., & Visitor Industries; Business & Financial Services; and Defense & Security are all Transforming clusters. Any amount of growth in these industries would require relatively large investments.

Star Industries

Star industry clusters are highly concentrated, exporting and still experiencing growth in the region. The most highly concentrated of the Star industry clusters in the EGR 4 is Transportation Equipment Mfg. Its location quotient is 8.77, indicating that the cluster is 8 times more concentrated in the region compared to the U.S. The other strong clusters in the region are Manufacturing Supercluster; Electrical Equip., App., & Comp. Mfg.; and four others.

Emerging Industries

Industry clusters that may be poised for future growth are classified as “Emerging.” There are five Emerging clusters in the EGR 4: Chemicals & Chemical Products; Transportation & Logistics; Energy; Education & Knowledge Creation; and Apparel & Textiles.



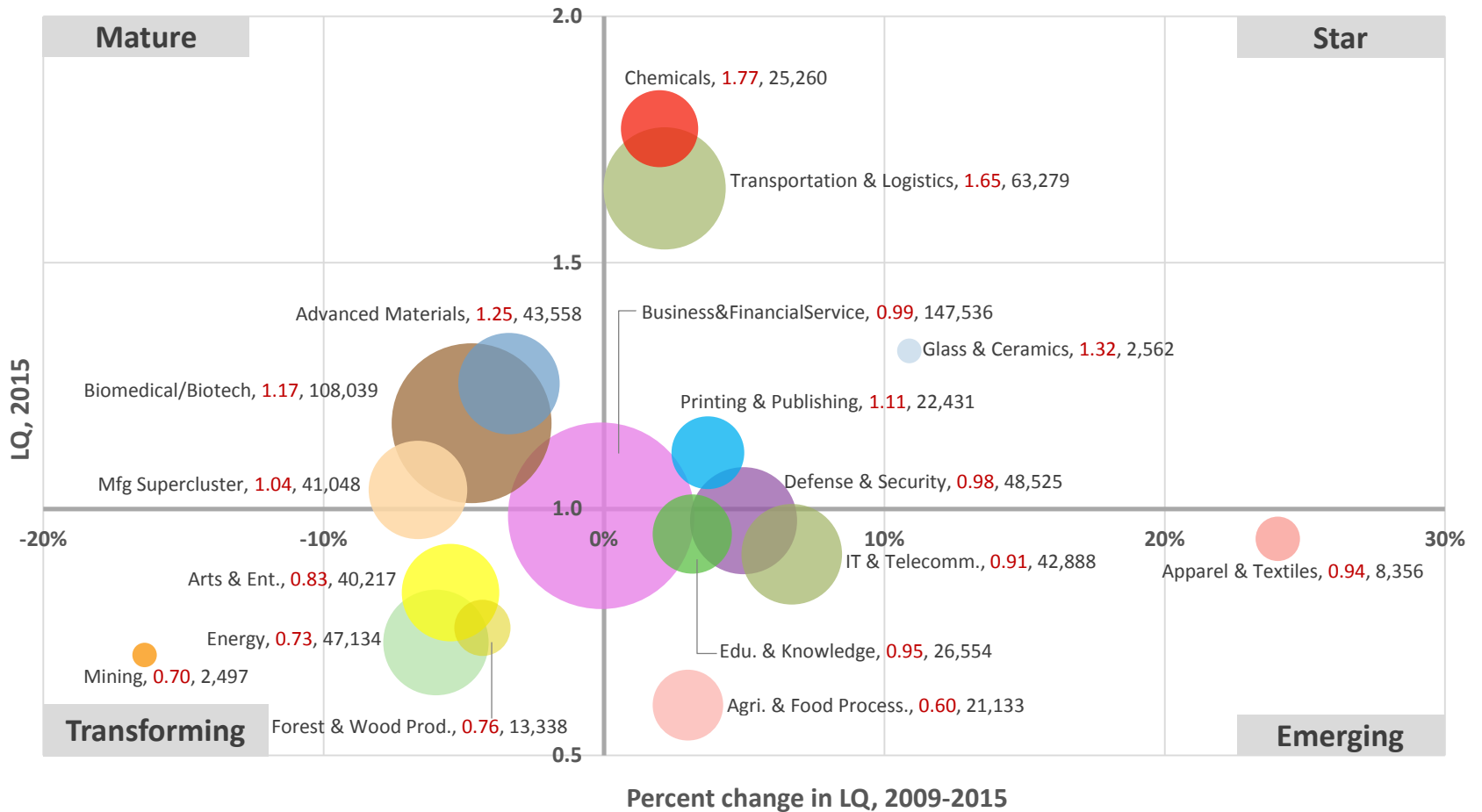
EGR 4

Economic Growth Region 5

Industry cluster analysis

Industry cluster analysis

Industry cluster bubble chart

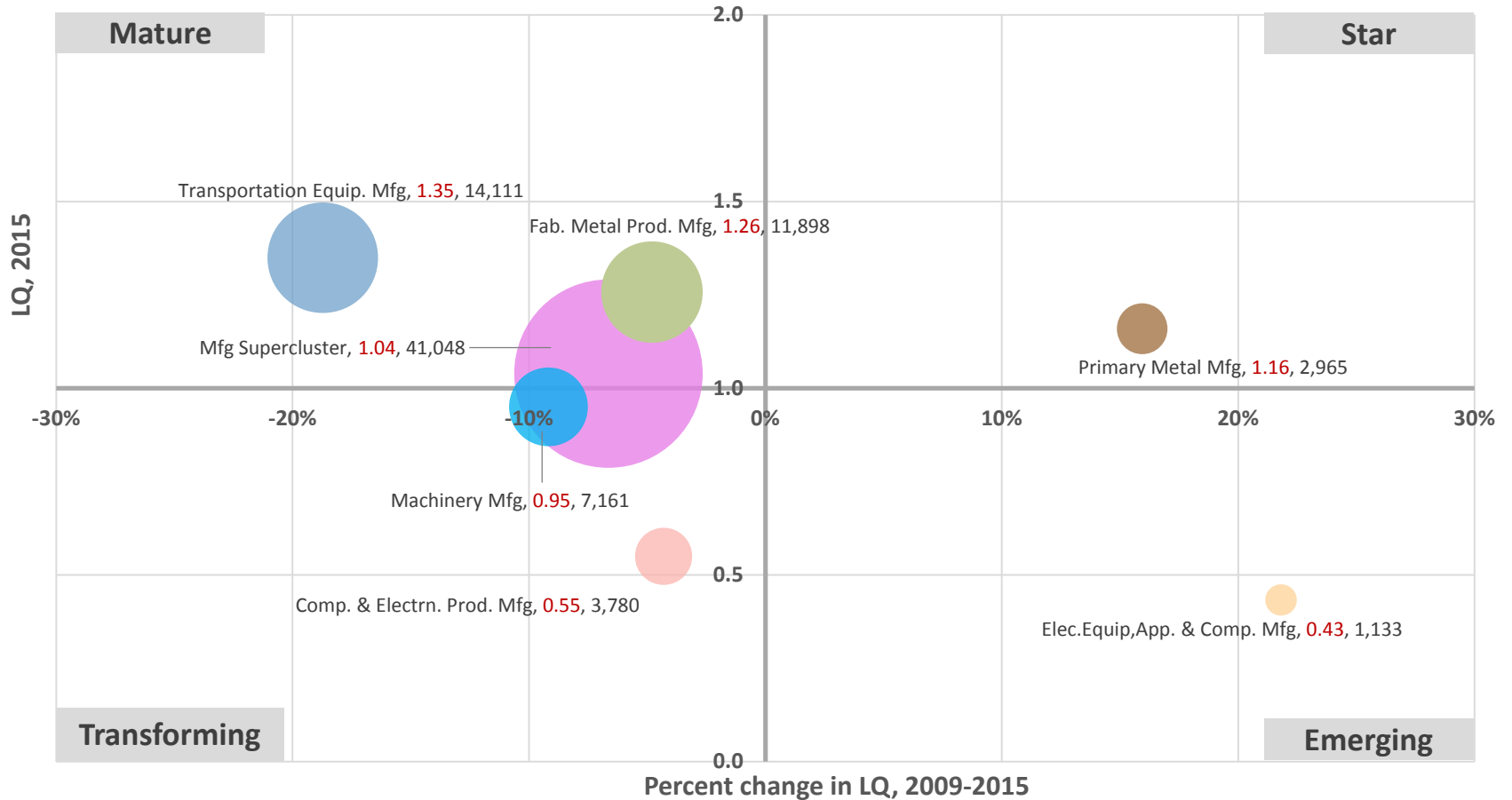


Note: Label includes cluster name, LQ 2015, and Employment 2015; NAICS 2012 definitions.

EGR 5

Industry cluster analysis

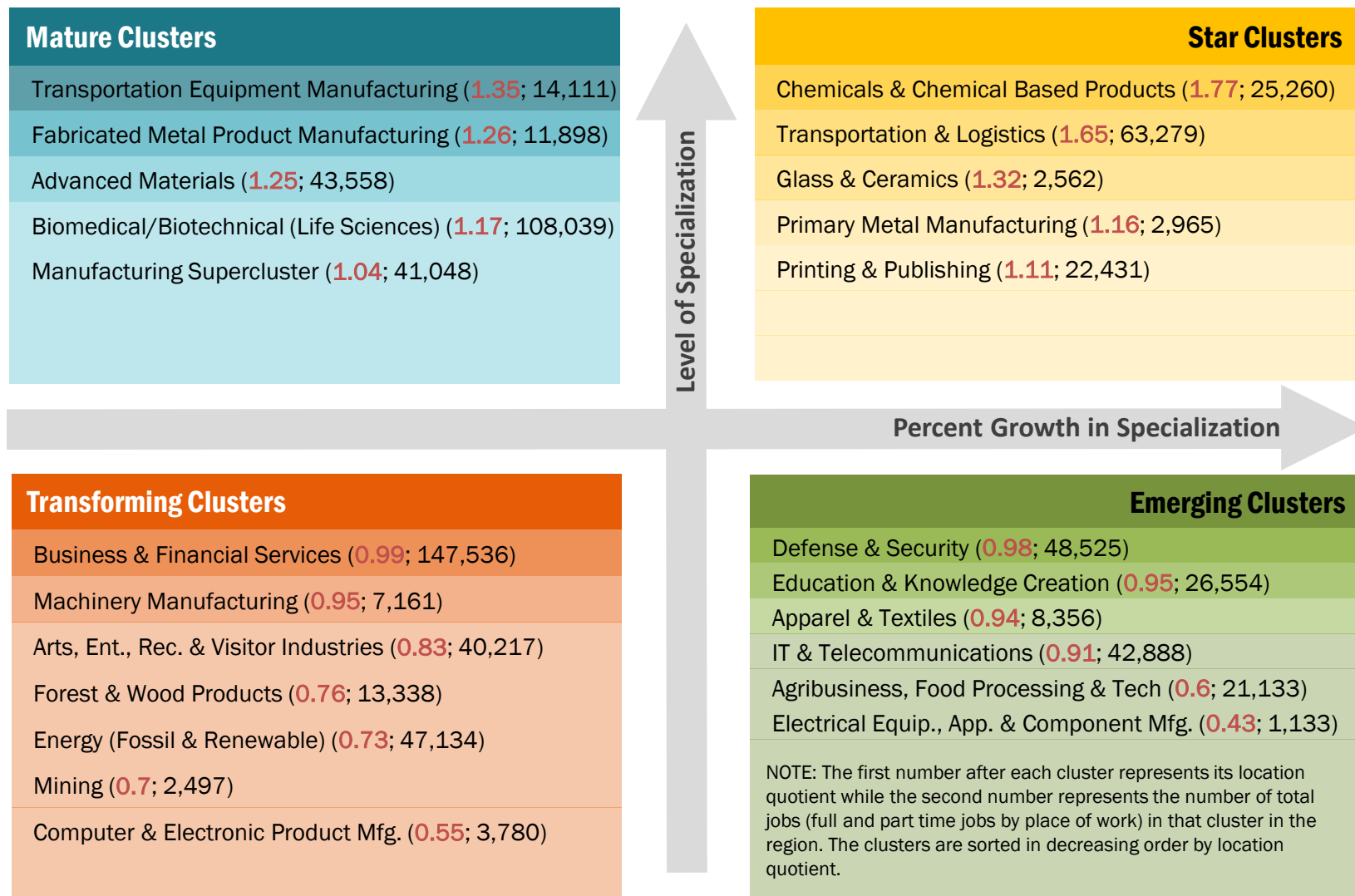
Manufacturing Supercluster bubble chart



Note: Label includes cluster name, LQ 2015, and Employment 2015; NAICS 2012 definitions.

EGR 5

Industry cluster analysis



Industry and occupation

Bubble chart interpretation

Mature Industries

Five industry clusters in the Indiana Economic Growth Region 5 (EGR 5) are in the Maturing stage: Transportation Equipment Mfg.; Fabricated Metal Prod. Mfg.; Advanced Materials; Biomedical; and Manufacturing Supercluster. These industries are relatively concentrated, but their growth is trending downward. It is worth noting, however, that the EGR 5 may find it worthwhile to invest in efforts to shore up the concentration of these industries.

Transforming Industries

Transforming clusters capture the mix of industries that are experiencing relative decline and limited export capability. In the EGR 5, Business & Financial Services; Machinery Mfg.; Arts, Ent., Rec., & Visitor Industries; Forest & Wood Products; Energy; Mining; and Computer & Electronic Prod. Mfg. are all Transforming clusters. Any amount of growth in these industries would require relatively large investments.

Star Industries

Star industry clusters are highly concentrated, exporting and still experiencing growth in the region. The most highly concentrated of the Star industry clusters in the EGR 5 is Chemicals cluster. Its location quotient is 1.77, indicating that the cluster is almost two times more concentrated in the region compared to the U.S. The other strong clusters in the region are Transportation and Logistics; Glass and Ceramics; and three others.

Emerging Industries

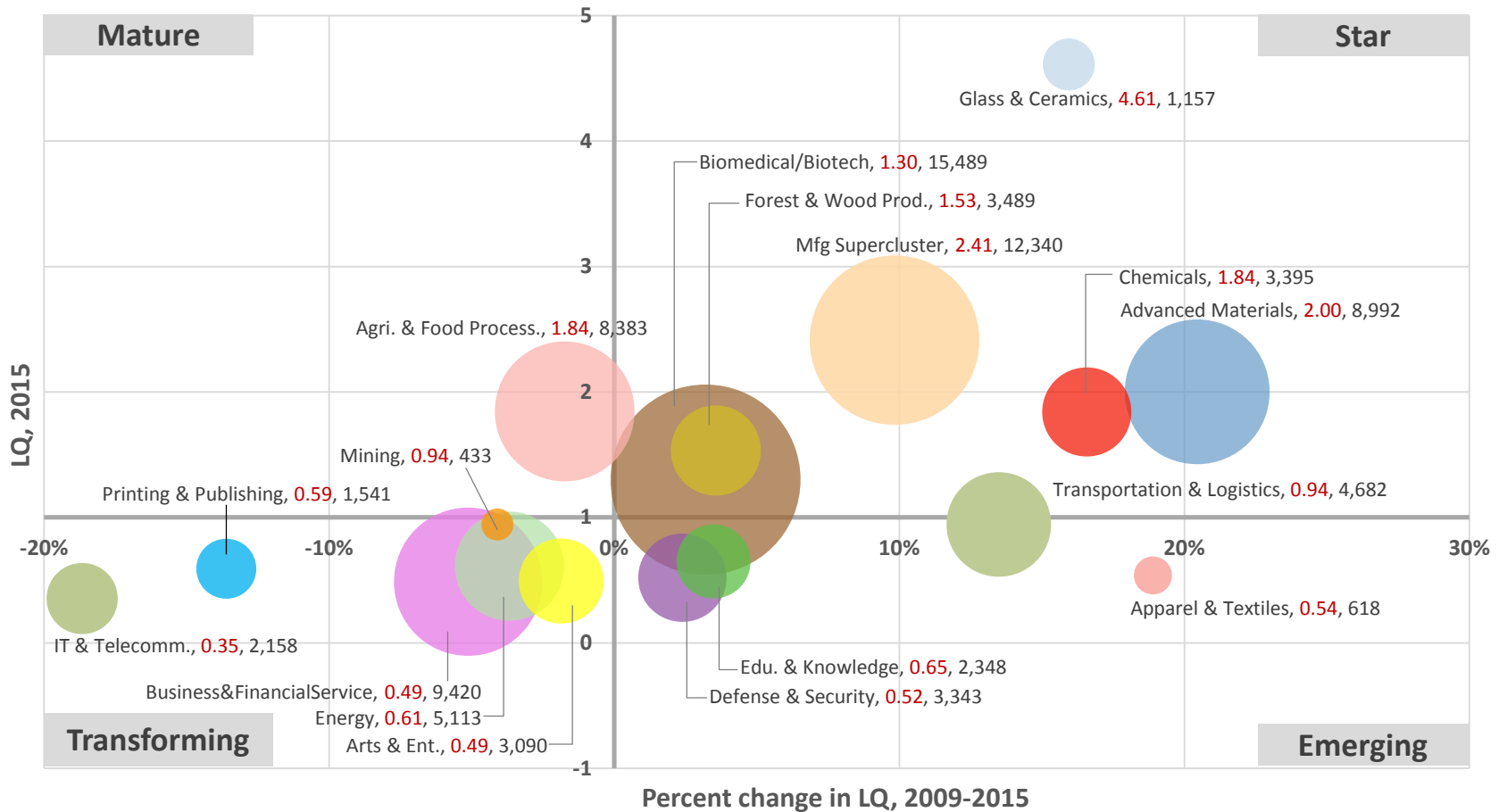
Industry clusters that may be poised for future growth are classified as “Emerging.” There are six Emerging clusters in the EGR 5 with top three being Defense & Security; Education & Knowledge Creation; Apparel & Textiles.

Economic Growth Region 6

Industry cluster analysis

Industry cluster analysis

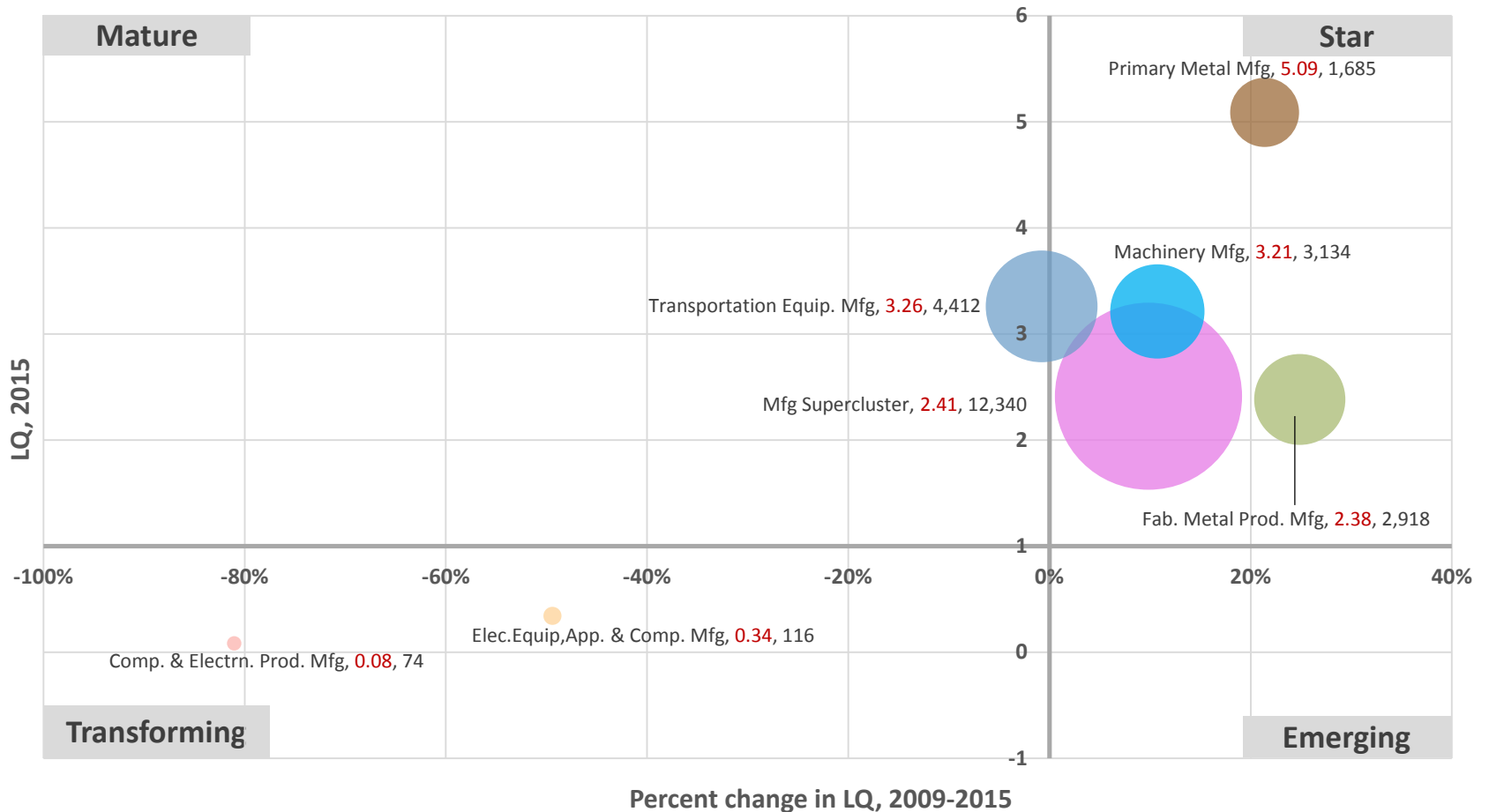
Industry cluster bubble chart



Note: Label includes cluster name, LQ 2015, and Employment 2015; NAICS 2012 definitions.

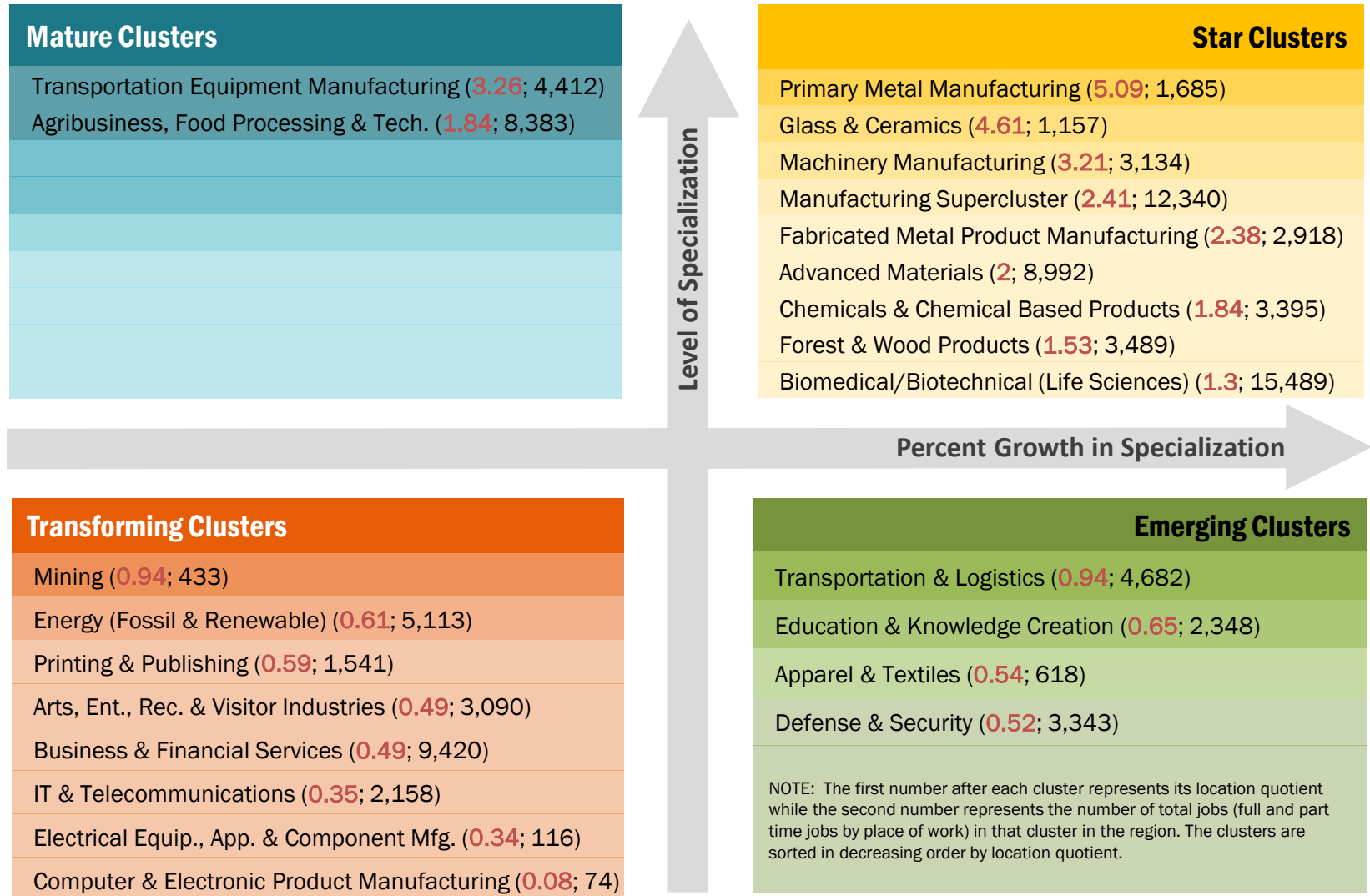
Industry cluster analysis

Manufacturing Supercluster bubble chart



Note: Label includes cluster name, LQ 2015, and Employment 2015; NAICS 2012 definitions.

Industry cluster analysis



Industry and occupation

Bubble chart interpretation

Mature Industries

Two industry clusters in the Indiana Economic Growth Region 6 (EGR 6) are in the Maturing stage: Transportation Equipment Manufacturing; and Agribusiness, Food Processing & Technology. These industries are relatively concentrated, but their growth is trending downward. It is worth noting, however, that the EGR 6 may find it worthwhile to invest in efforts to shore up the concentration of these industries.

Transforming Industries

Transforming clusters capture the mix of industries that are experiencing relative decline and limited export capability. In the EGR 6, Mining; Energy; Printing & Publishing; Arts, Ent., Rec., & Visitor Industries; Business & Financial Services and three others are all Transforming clusters. Any amount of growth in these industries would require relatively large investments.

Star Industries

Star industry clusters are highly concentrated, exporting and still experiencing growth in the region. The most highly concentrated of the Star industry clusters in the EGR 6 is Primary Metal Mfg.. Its location quotient is 5.09, indicating that the cluster is 5 times more concentrated in the region compared to the U.S. The other strong clusters in the region are Glass & Ceramics; Machinery Mfg.; Manufacturing Supercluster; and five others.

Emerging Industries

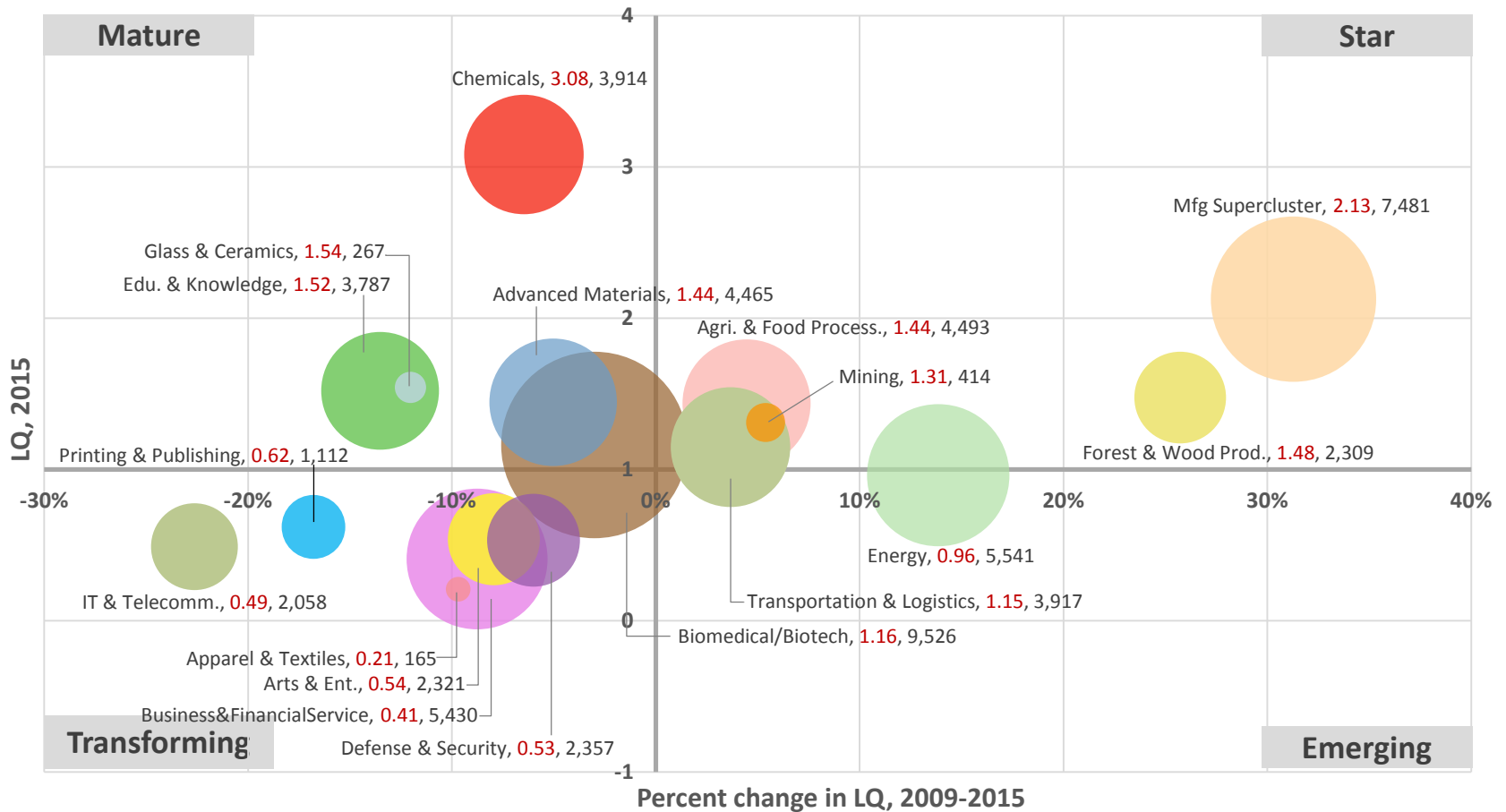
Industry clusters that may be poised for future growth are classified as “Emerging.” There are four Emerging clusters in the EGR 6: Transportation & Logistics; Education & Knowledge Creation; Apparel & Textiles; and Defense & Security.

Economic Growth Region 7

Industry cluster analysis

Industry cluster analysis

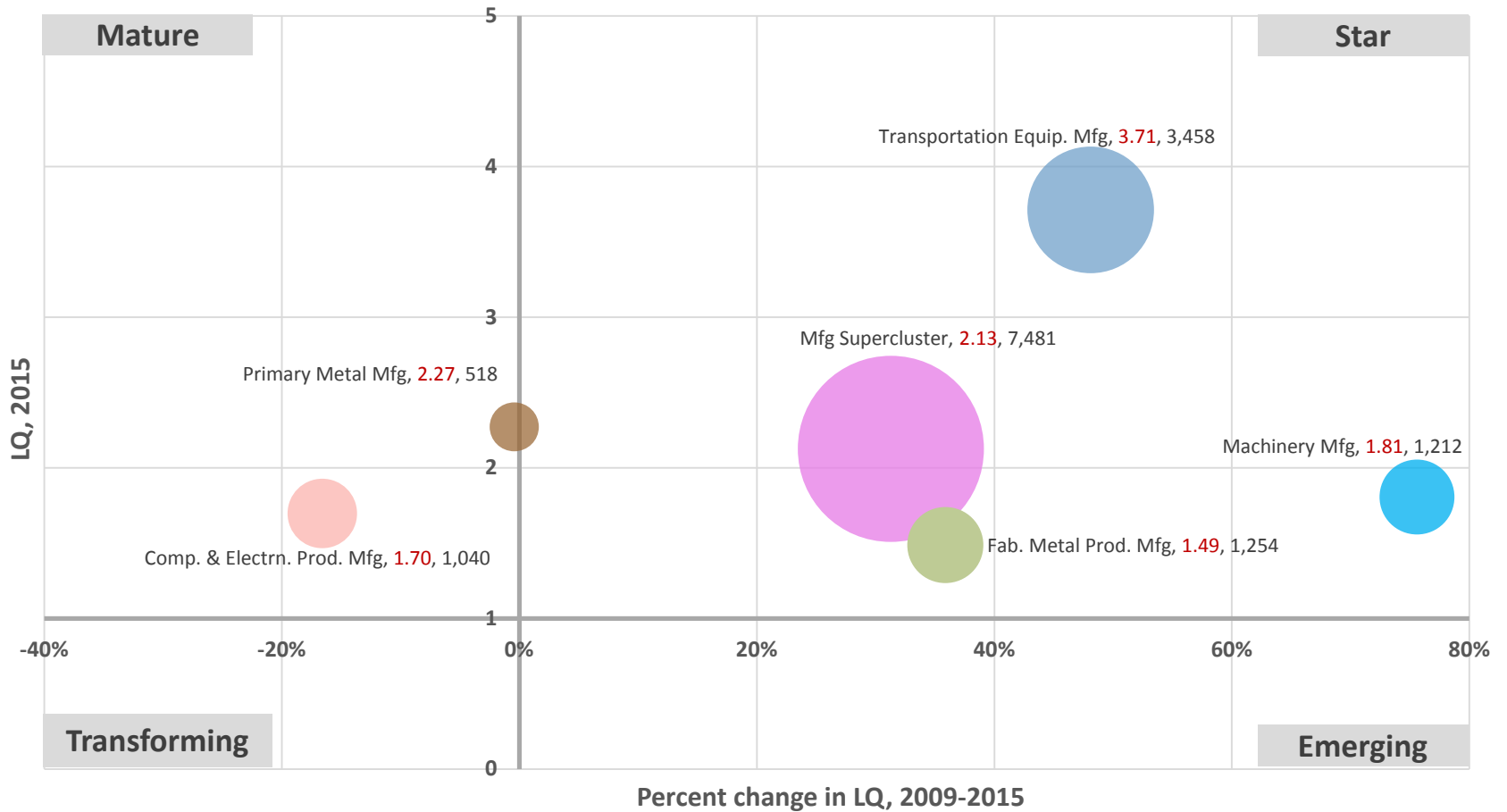
Industry cluster bubble chart



Note: Label includes cluster name, LQ 2015, and Employment 2015; NAICS 2012 definitions.

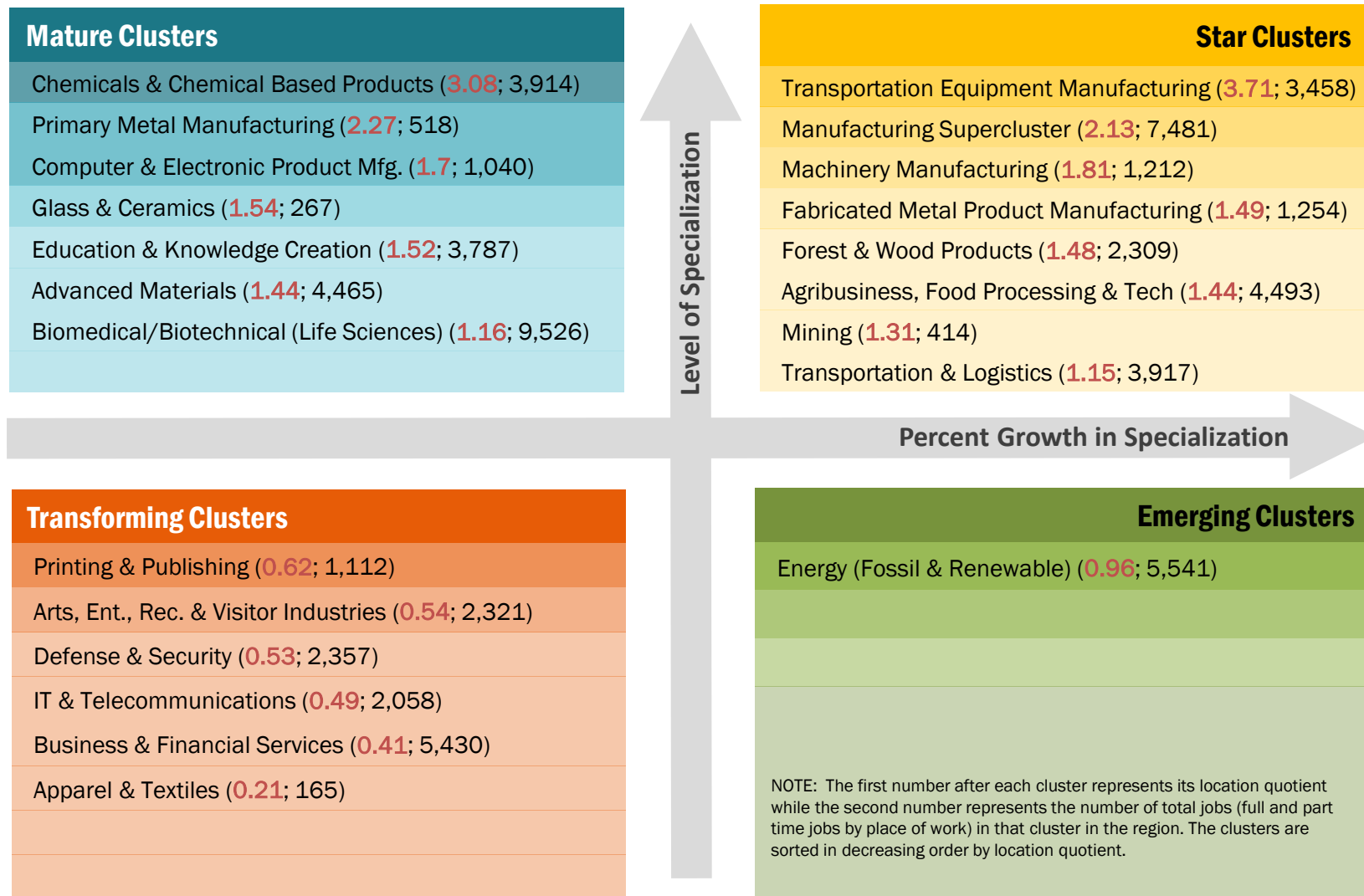
Industry cluster analysis

Manufacturing sub-cluster bubble chart



Note: Label includes cluster name, LQ 2015, and Employment 2015; NAICS 2012 definitions.

Industry cluster analysis



Note: No regional jobs in Electrical Equipment, Appliance & Component Manufacturing cluster.

Source: EMSI 2016.4 (QCEW Employees, Non-QCEW Employees, Self-Employed, and Extended Proprietors); Industry cluster definitions by PCRD.

Industry cluster analysis

Bubble chart interpretation

Mature Industries

Seven industry clusters in the Indiana Economic Growth Region 7 (EGR 7) are in the Maturing stage: Chemicals; Primary Metal Mfg.; Computer & Electronic Prod. Mfg.; Glass & Ceramics; and three others. These industries are relatively concentrated, but their growth is trending downward. It is worth noting, however, that the Indiana EGR 7 may find it worthwhile to invest in efforts to shore up the concentration of these industries.

Transforming Industries

Transforming clusters capture the mix of industries that are experiencing relative decline and limited export capability. In the EGR 7, Printing & Publishing; Arts, Ent., Rec., & Visitor Industries; Defense & Security; IT & Telecommunications; Business & Financial Services; and Apparel & Textiles are all Transforming clusters. Any amount of growth in these industries would require relatively large investments.

Star Industries

Star industry clusters are highly concentrated, exporting and still experiencing growth in the region. The most highly concentrated of the Star industry clusters in the EGR 7 is Transportation Equipment Mfg. Its location quotient is 3.71, indicating that the cluster is almost 4 times more concentrated in the region compared to the U.S. The other strong clusters in the region are Manufacturing Supercluster; Machinery Manufacturing; and five others.

Emerging Industries

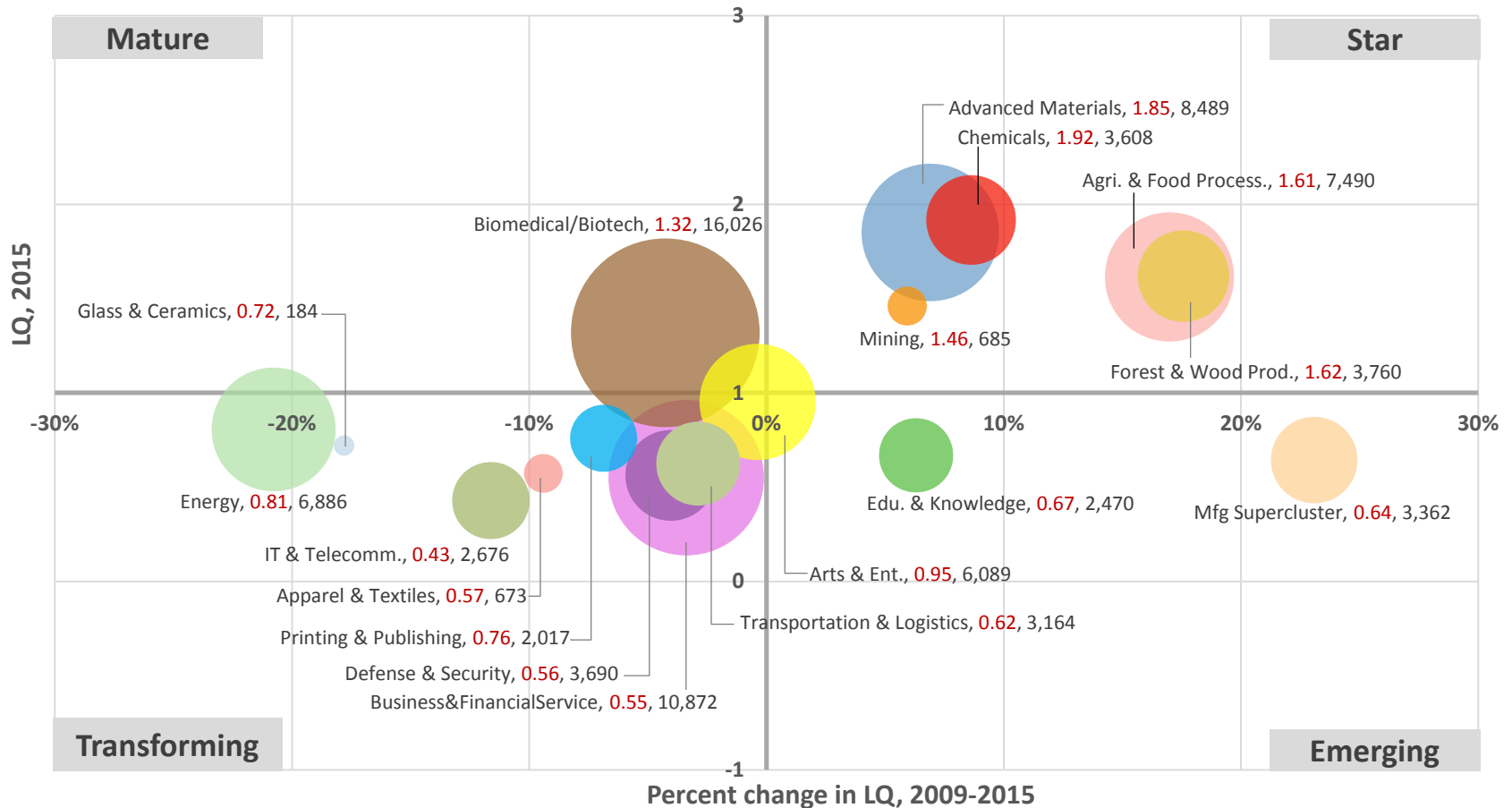
Industry clusters that may be poised for future growth are classified as “Emerging.” There are only one Emerging clusters in the EGR 7: Energy and Defense & Security.

Economic Growth Region 8

Industry cluster analysis

Industry cluster analysis

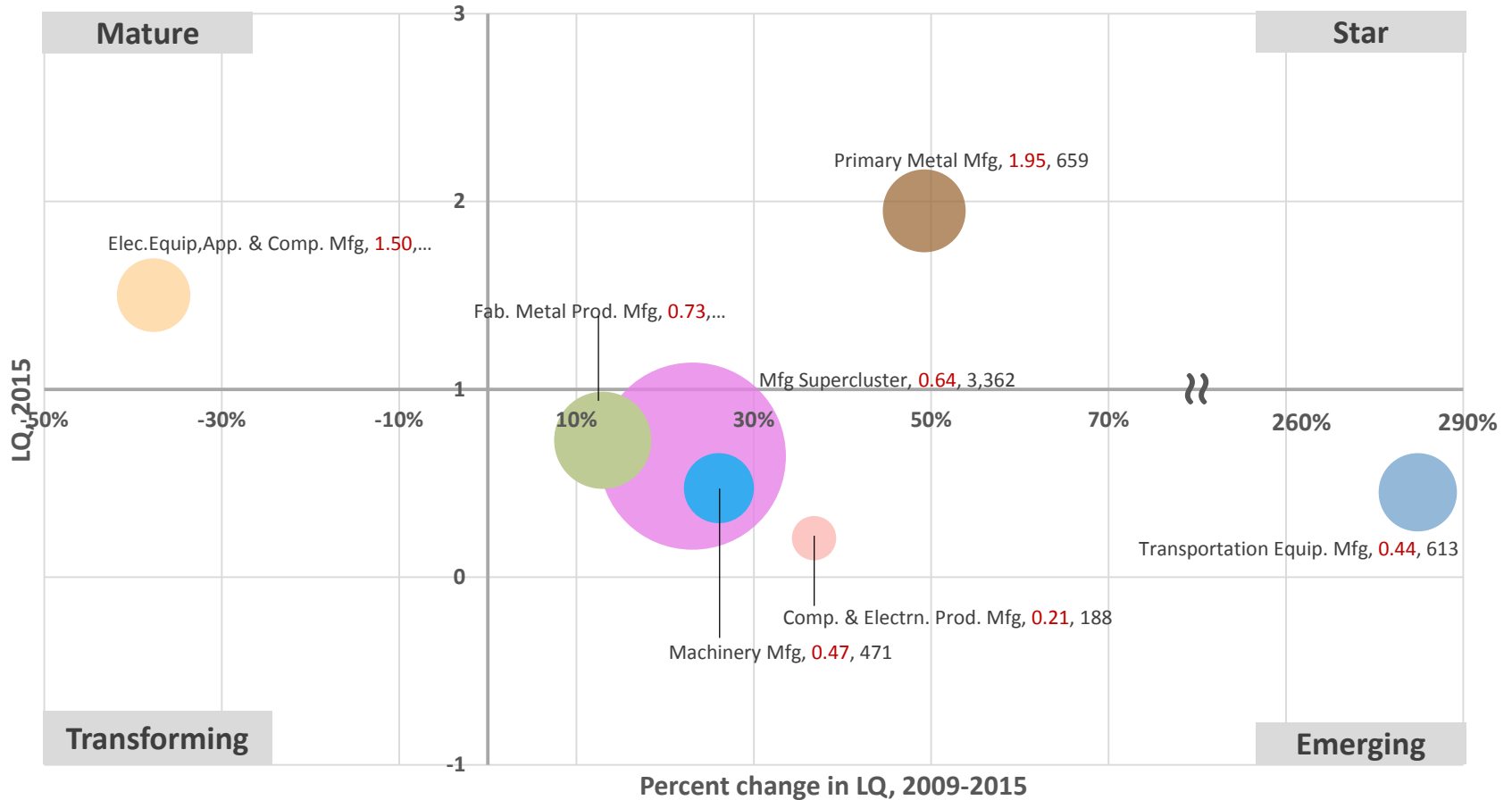
Industry cluster bubble chart



Note: Label includes cluster name, LQ 2015, and Employment 2015; NAICS 2012 definitions.

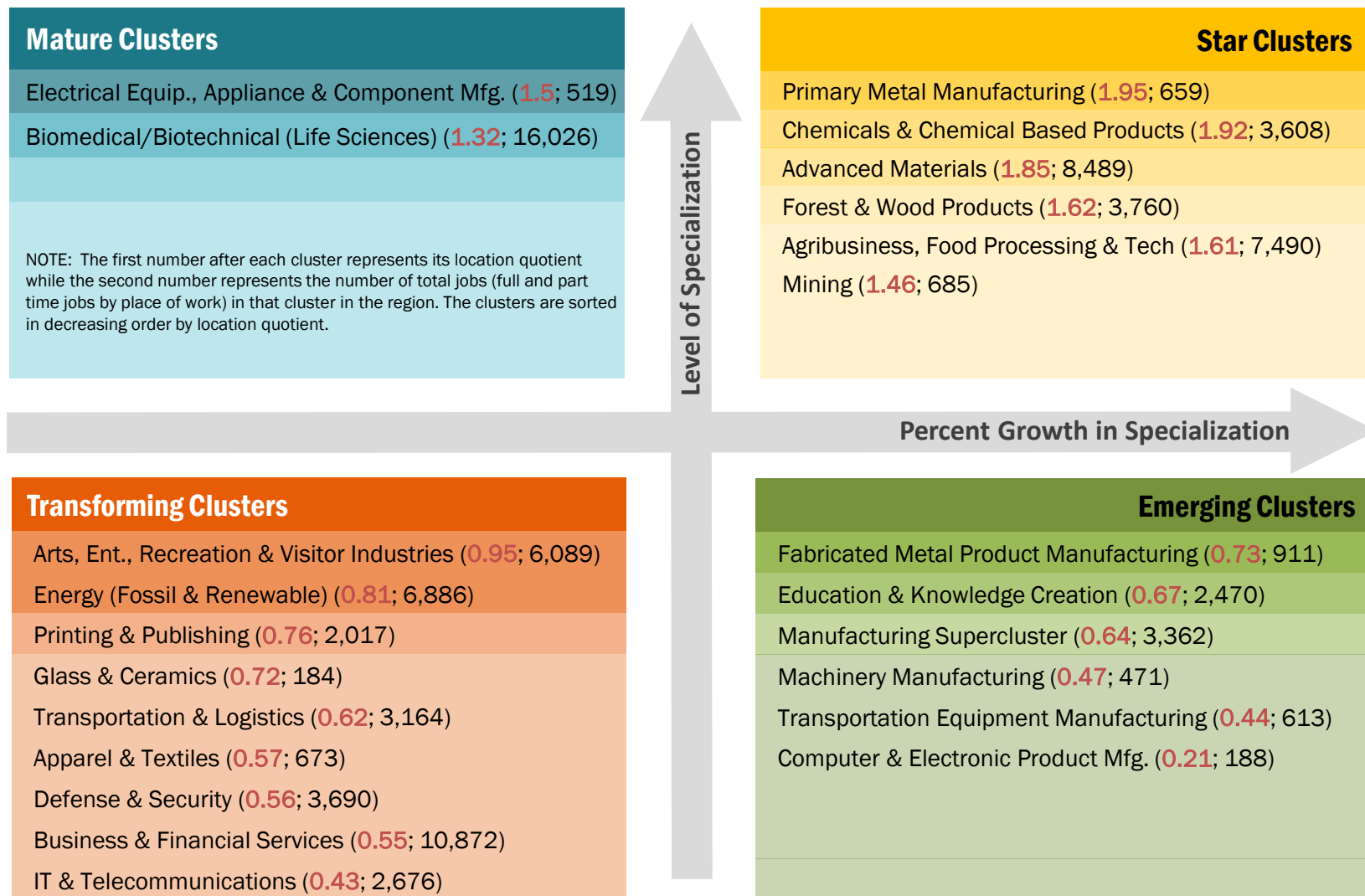
Industry cluster analysis

Manufacturing sub-cluster bubble chart



Note: Label includes cluster name, LQ 2015, and Employment 2015; NAICS 2012 definitions.

Industry cluster analysis



Industry cluster analysis

Bubble chart interpretation

Mature Industries

Two industry clusters in the Indiana Economic Growth Region 8 (EGR 8) are in the Maturing stage: Electrical Equipment, Appliances & Component Mfg. and Biomedical/Biotechnical. These industries are relatively concentrated, but their growth is trending downward. It is worth noting, however, that the Indiana EGR 8 may find it worthwhile to invest in efforts to shore up the concentration of these industries.

Transforming Industries

Transforming clusters capture the mix of industries that are experiencing relative decline and limited export capability. In the EGR 8, Arts, Ent., Rec. & Visitor Industries; Energy; Printing & Publishing; Glass & Ceramics; Transportation & Logistics; Apparel & Textiles; Defense & Security; Business & Financial Services; and IT & Telecommunications are all Transforming clusters. Any amount of growth in these industries would require relatively large investments.

Star Industries

Star industry clusters are highly concentrated, exporting and still experiencing growth in the region. The most highly concentrated of the Star industry clusters in the EGR 8 is Primary Metal Mfg.. Its location quotient is 1.96, indicating that the cluster is 2 times more concentrated in the region compared to the U.S. The other strong clusters in the region are Chemicals; Advanced Materials; Forest & Wood Products; and two others.

Emerging Industries

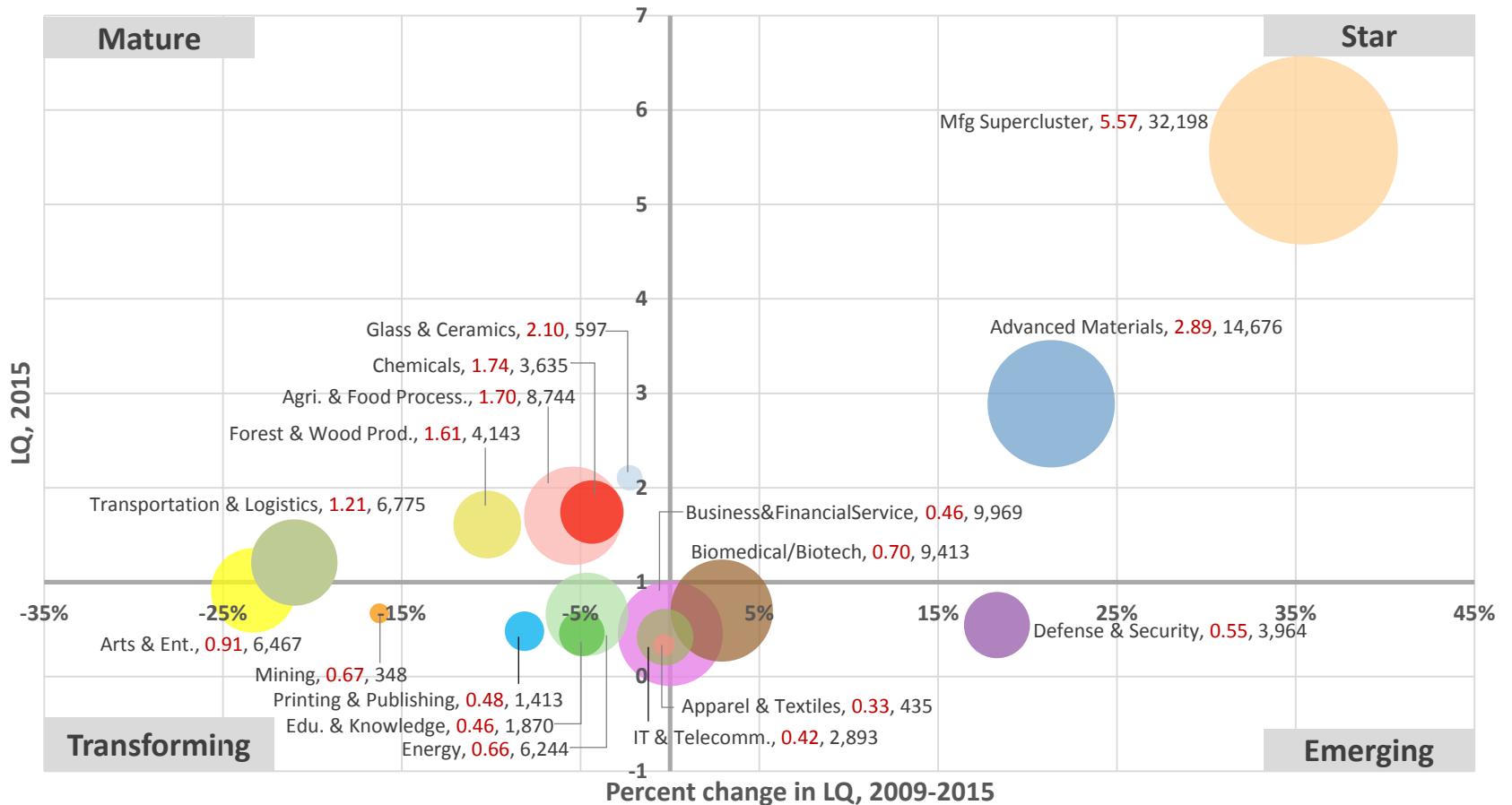
Industry clusters that may be poised for future growth are classified as “Emerging.” There are total six Emerging clusters in the EGR 8. Top three are Fabricated Metal Product Mfg.; Education & Knowledge Creation; and Manufacturing Supercluster.

Economic Growth Region 9

Industry cluster analysis

Industry cluster analysis

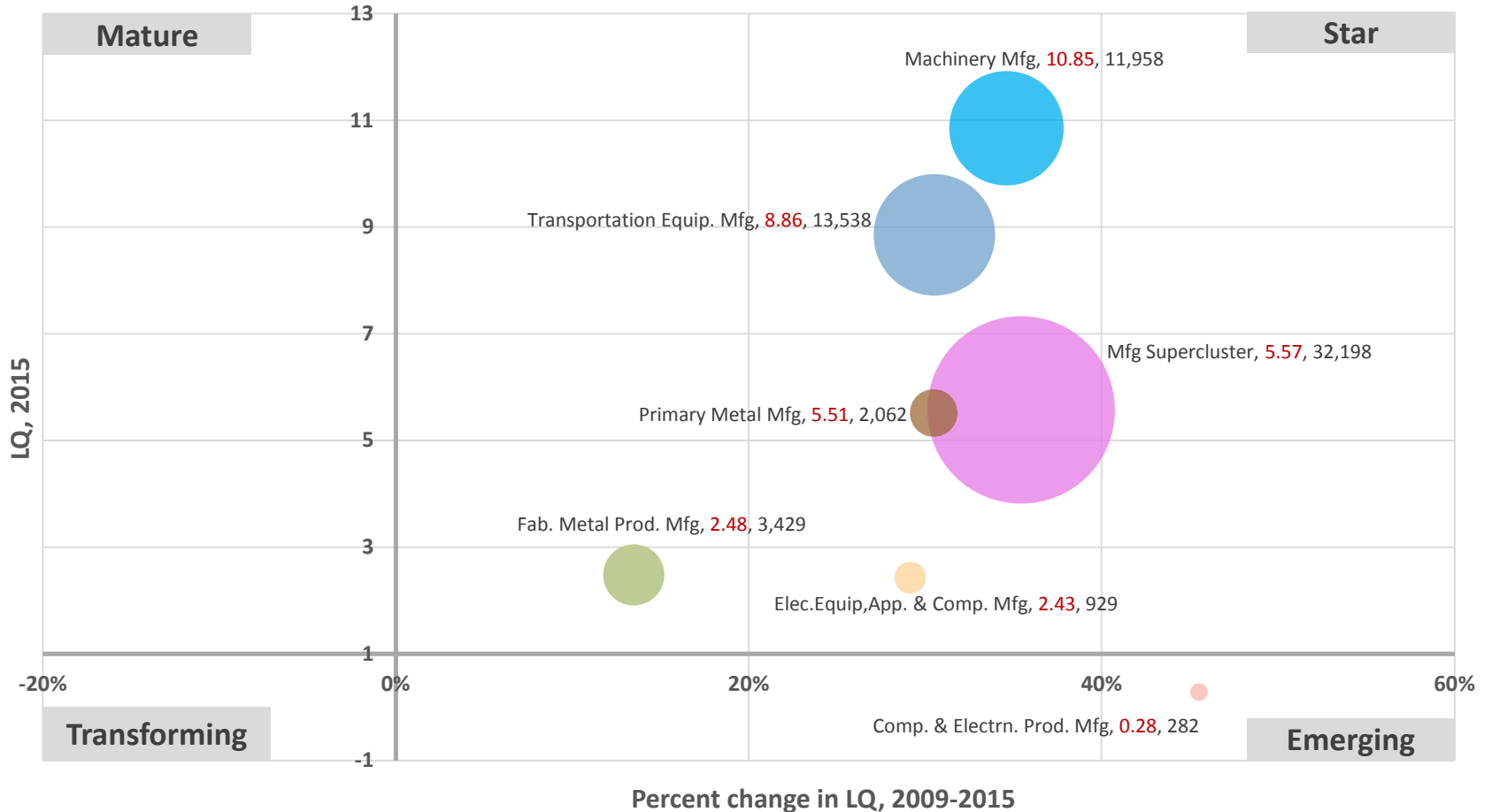
Industry cluster bubble chart



Note: Label includes cluster name, LQ 2015, and Employment 2015; NAICS 2012 definitions.

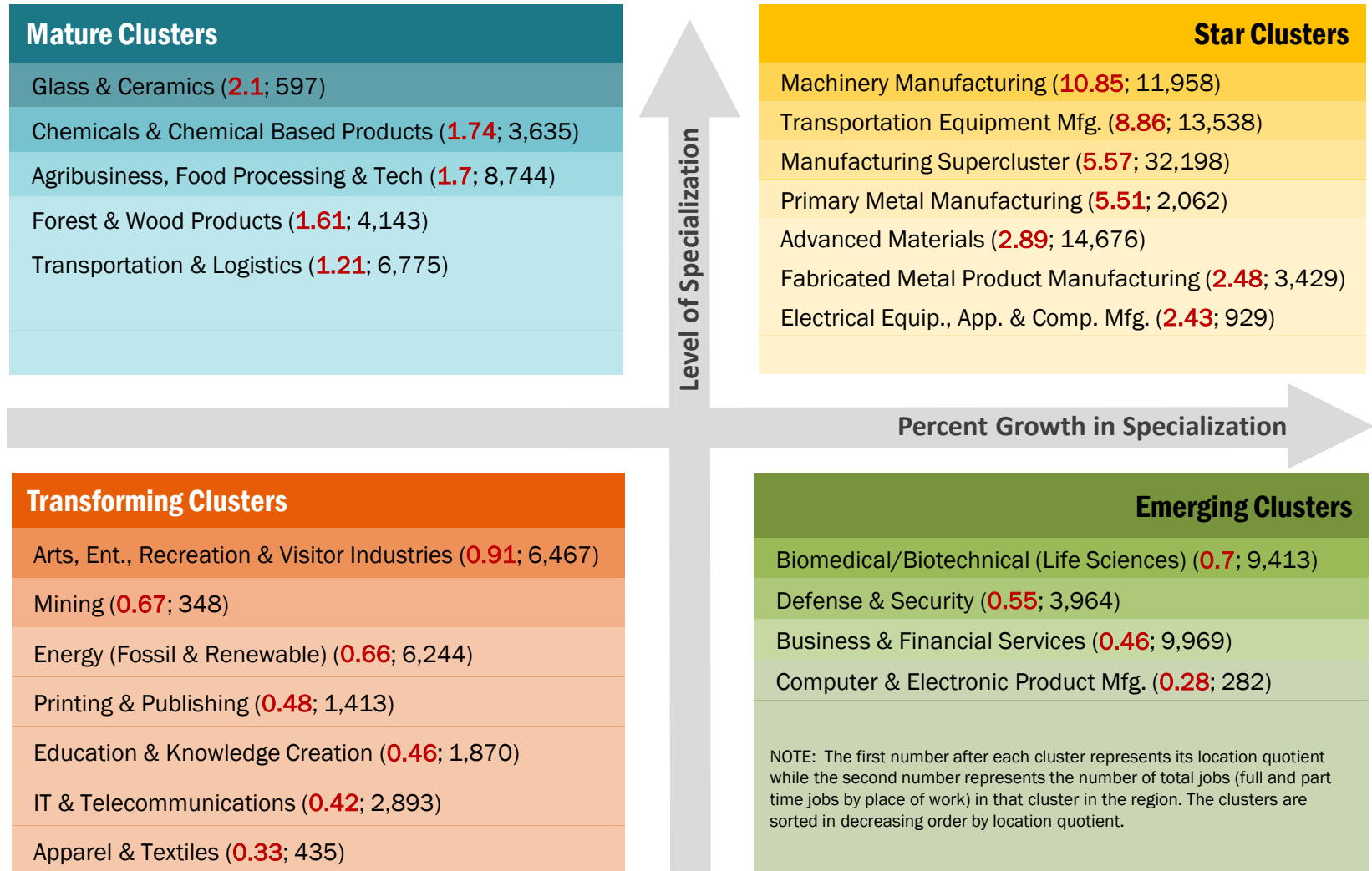
Industry cluster analysis

Manufacturing Supercluster bubble chart



Note: Label includes cluster name, LQ 2015, and Employment 2015; NAICS 2012 definitions.

Industry cluster analysis



Industry cluster analysis

Bubble chart interpretation

Mature Industries

Five industry clusters in the Indiana Economic Growth Region 9 (EGR 9) are in the Maturing stage: Glass & Ceramics; Chemicals; Agribusiness, Food Processing & Tech.; Forest & Wood Products; and Transportation & Logistics. These industries are relatively concentrated, but their growth is trending downward. It is worth noting, however, that the Indiana EGR 9 may find it worthwhile to invest in efforts to shore up the concentration of these industries.

Transforming Industries

Transforming clusters capture the mix of industries that are experiencing relative decline and limited export capability. In the EGR 9, Arts, Entertainment, Recreational & Visitor Industries; Mining; Energy; Printing & Publishing; Education & Knowledge Creation; IT & Telecommunications; and Apparel & Textiles are all Transforming clusters. Any amount of growth in these industries would require relatively large investments.

Star Industries

Star industry clusters are highly concentrated, exporting and still experiencing growth in the region. The most highly concentrated of the Star industry clusters in the EGR 9 is Machinery Mfg. Its location quotient is 10.85, indicating that the cluster is more than 10 times concentrated in the region compared to the U.S. The other strong clusters in the region are Transportation Equipment Mfg.; Manufacturing Supercluster; Primary Metal Mfg. and three others.

Emerging Industries

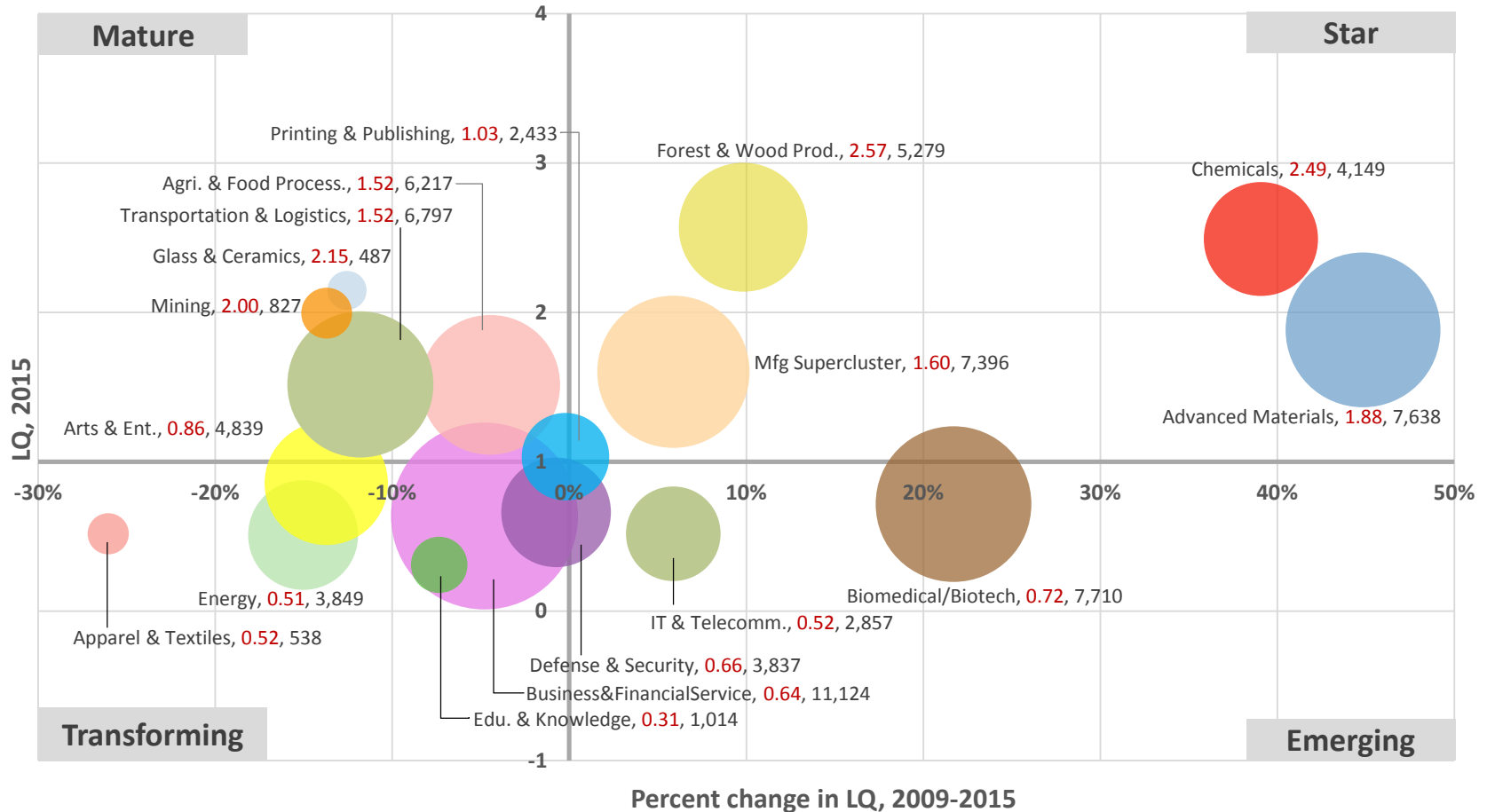
Industry clusters that may be poised for future growth are classified as “Emerging.” There are total four Emerging clusters in the EGR 9: Biomedical/Biotechnical (Life Sciences); Defense & Security; Business & Financial Services; and Computer & Electronic Product Mfg.

Economic Growth Region 10

Industry cluster analysis

Industry cluster analysis

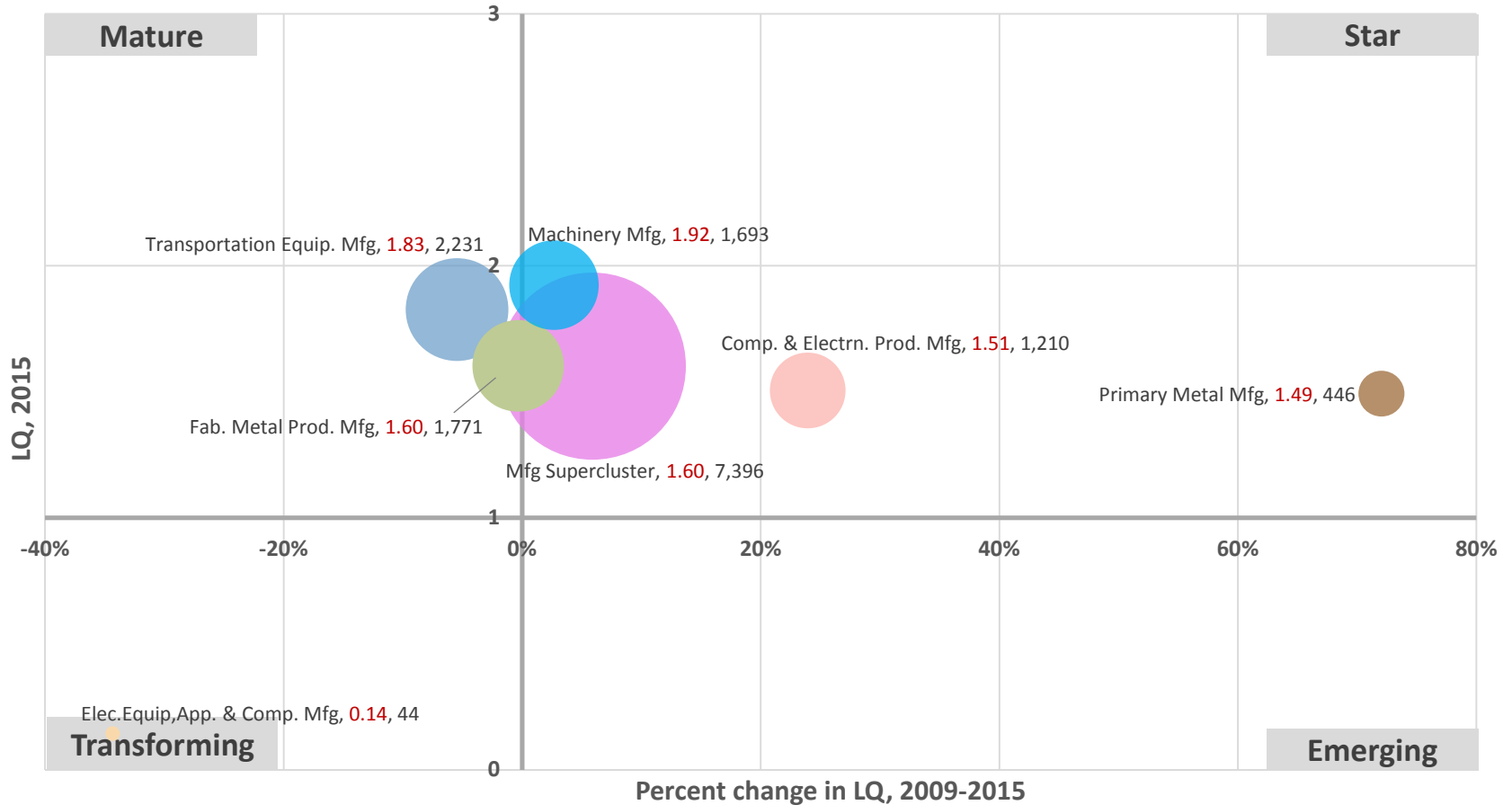
Industry cluster bubble chart



Note: Label includes cluster name, LQ 2015, and Employment 2015; NAICS 2012 definitions.

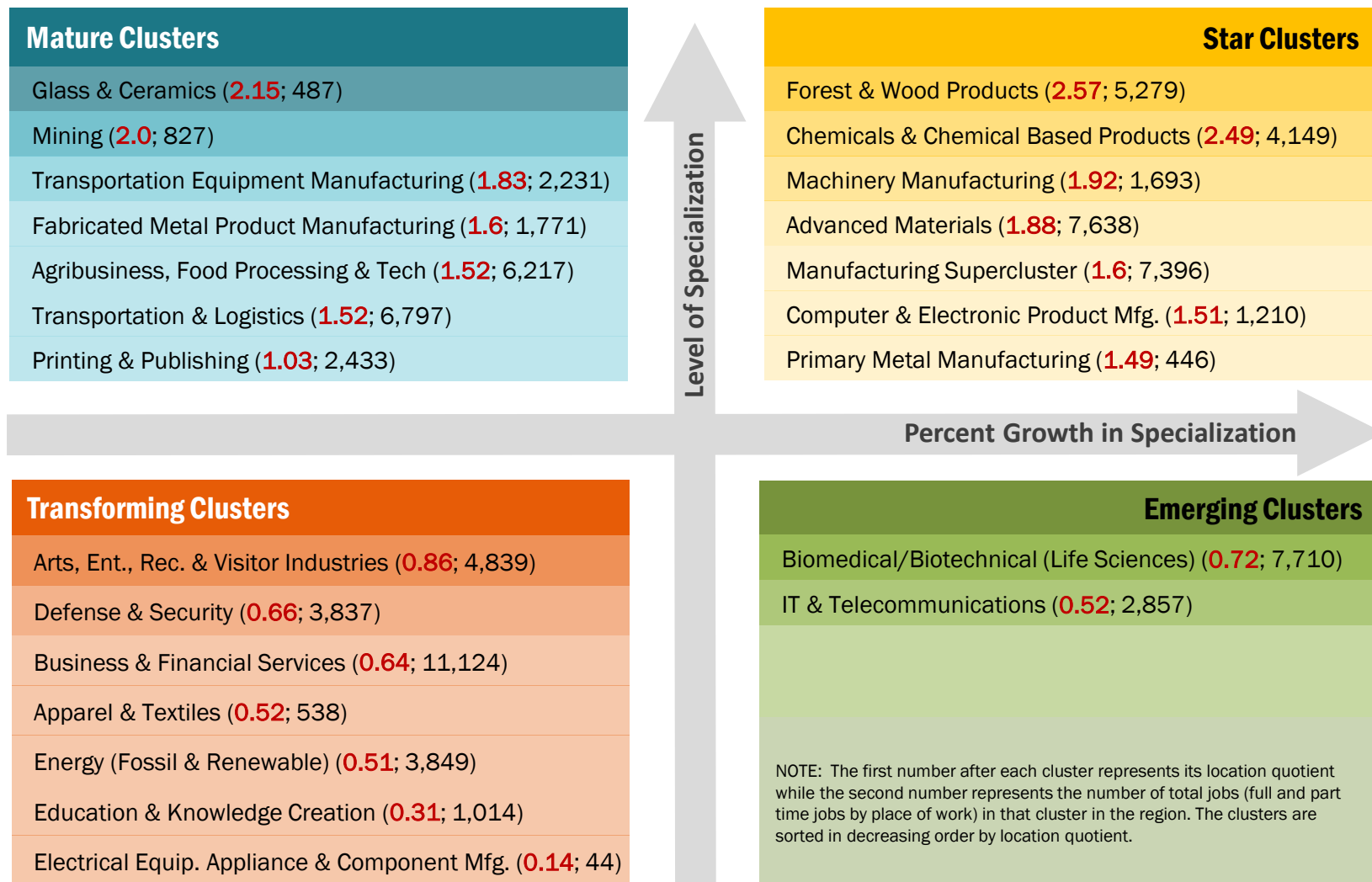
Industry cluster analysis

Manufacturing Supercluster bubble chart



Note: Label includes cluster name, LQ 2015, and Employment 2015; NAICS 2012 definitions.

Industry cluster analysis



Industry cluster analysis

Bubble chart interpretation

Mature Industries

Seven industry clusters in the Indiana Economic Growth Region 10 (EGR 10) are in the Maturing stage: Glass & Ceramics; Mining; Transportation Equipment Mfg.; Fabricated Metal Product Mfg.; and three others. These industries are relatively concentrated, but their growth is trending downward. It is worth noting, however, that the Indiana EGR 10 may find it worthwhile to invest in efforts to shore up the concentration of these industries.

Transforming Industries

Transforming clusters capture the mix of industries that are experiencing relative decline and limited export capability. In the EGR 10, Arts, Entertainment, Recreational & Visitor Industries; Defense & Security; Business & Financial Services; Apparel & Textiles; and three others are all Transforming clusters. Any amount of growth in these industries would require relatively large investments.

Star Industries

Star industry clusters are highly concentrated, exporting and still experiencing growth in the region. The most highly concentrated of the Star industry clusters in the EGR 10 is Forest & Wood Products. Its location quotient is 2.57, indicating that the cluster is around 3 times more concentrated in the region compared to the U.S. The other strong clusters in the region are Chemicals; Machinery Mfg.; Advanced Materials and three others.

Emerging Industries

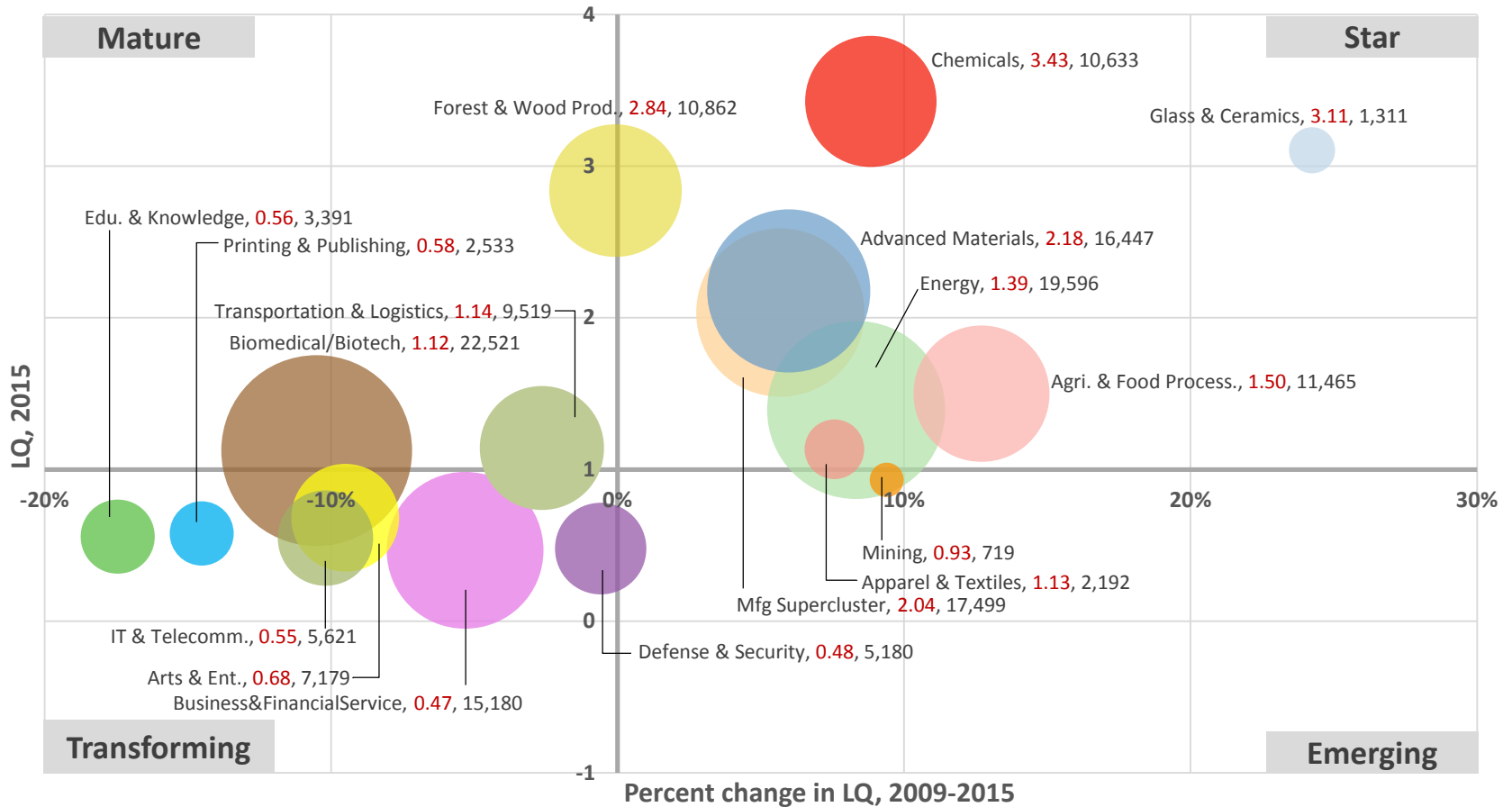
Industry clusters that may be poised for future growth are classified as “Emerging.” There are two Emerging clusters in the EGR 10: Biomedical/Biotechnical (Life Sciences); and IT & Telecommunications.

Economic Growth Region 11

Industry cluster analysis

Industry cluster analysis

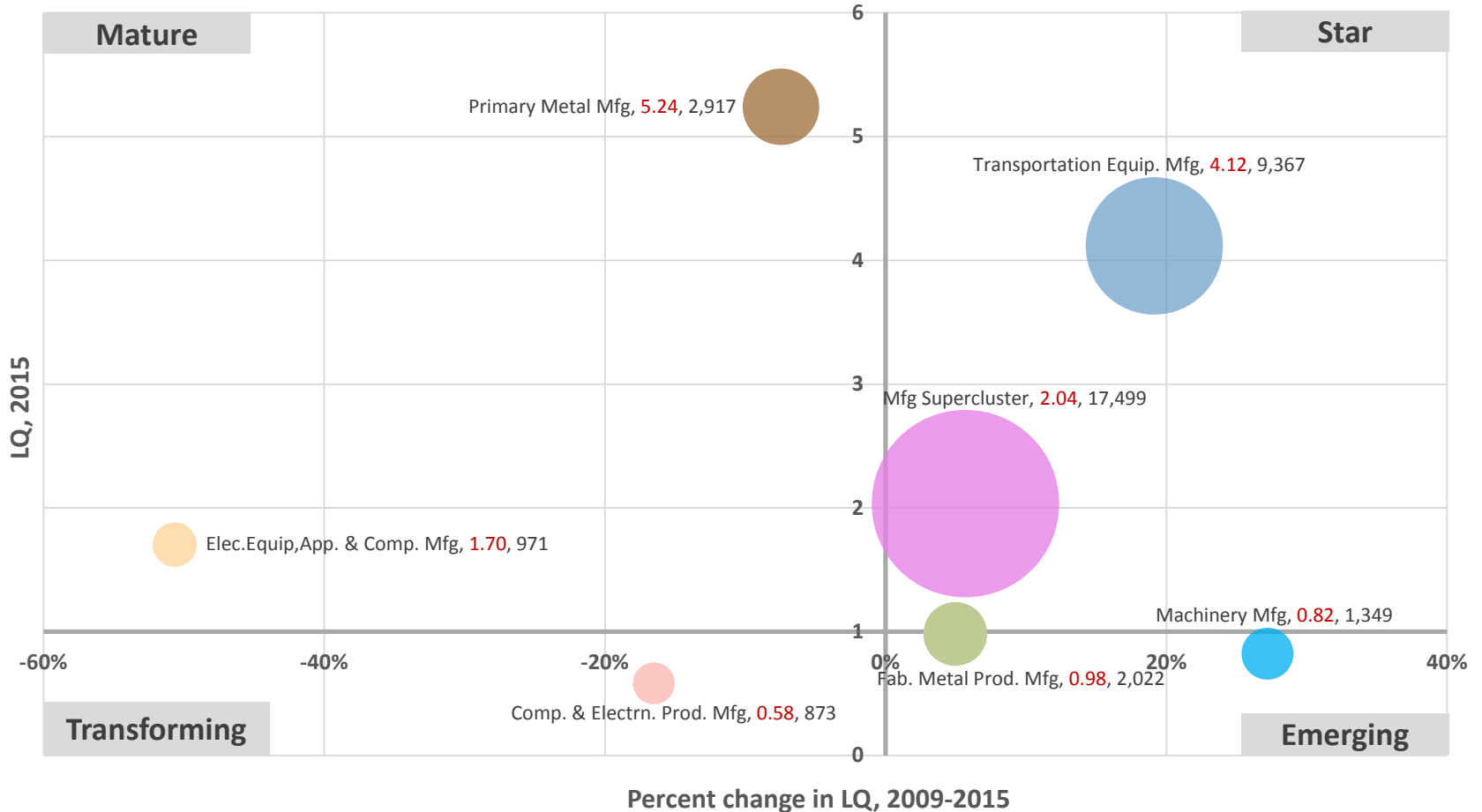
Industry cluster bubble chart



Note: Label includes cluster name, LQ 2015, and Employment 2015; NAICS 2012 definitions.

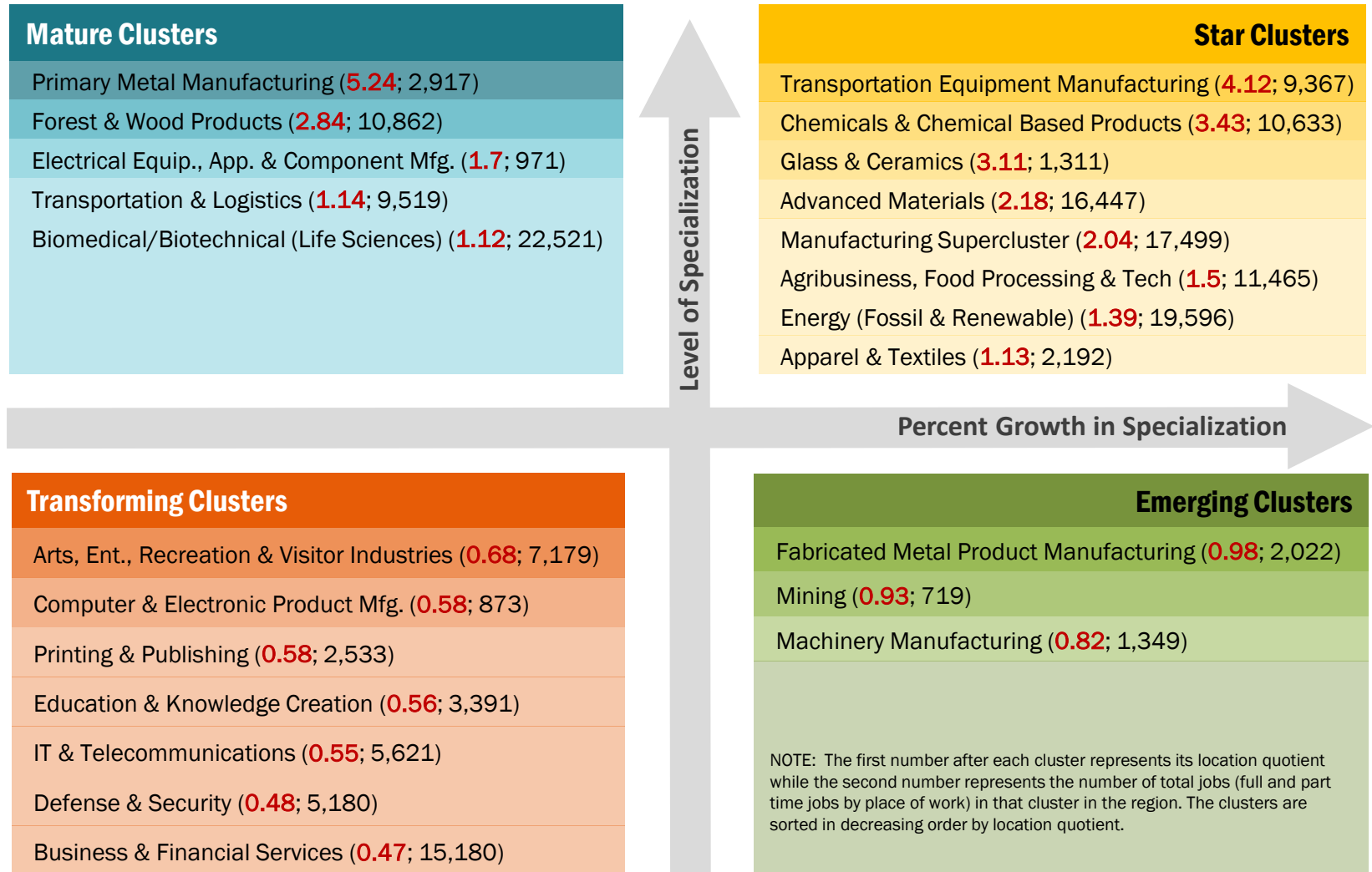
Industry cluster analysis

Manufacturing Supercluster bubble chart



Note: Label includes cluster name, LQ 2015, and Employment 2015; NAICS 2012 definitions.

Industry cluster analysis



Industry cluster analysis

Bubble chart interpretation

Mature Industries

Five industry clusters in the Indiana Economic Growth Region 11 (EGR 11) are in the Maturing stage: Primary Metal Mfg.; Forest & Wood Products; Electrical Equip., App. & Comp. Mfg.; Transportation & Logistics; and Biomedical. These industries are relatively concentrated, but their growth is trending downward. It is worth noting, however, that the Indiana EGR 11 may find it worthwhile to invest in efforts to shore up the concentration of these industries.

Transforming Industries

Transforming clusters capture the mix of industries that are experiencing relative decline and limited export capability. In the EGR 11, Arts, Ent., Rec. & Visitor Industries; Computer & Electronic Product Mfg.; Printing & Publishing; and four others are all Transforming clusters. Any amount of growth in these industries would require relatively large investments.

Star Industries

Star industry clusters are highly concentrated, exporting and still experiencing growth in the region. The most highly concentrated of the Star industry clusters in the EGR 11 is Transportation Equipment Mfg. Its location quotient is 4.12, indicating that the cluster is more than 4 times more concentrated in the region compared to the U.S. The other strong clusters in the region include Chemicals; Glass & Ceramics; Advanced Materials; and four others.

Emerging Industries

Industry clusters that may be poised for future growth are classified as “Emerging.” There are three Emerging clusters in the EGR 11: Fabricated Metal Product Manufacturing; Mining; and Machinery Manufacturing..

Report Contributors

This report was prepared by the Purdue Center for Regional Development for
Indiana State Department of Agriculture



Report Authors

Bo Beaulieu, PhD
Indraneel Kumar, PhD
Andrey Zhalnin, PhD



Data Analysis

Ayoung Kim
Indraneel Kumar, PhD



Report Design

Tyler Wright

PURDUE
UNIVERSITY



Center for Regional Development
Advancing Collaboration : Energizing Regions

The Purdue Center for Regional Development (PCRD) seeks to pioneer new ideas and strategies that contribute to regional collaboration, innovation and prosperity.

For more information,
please contact:

Dr. Bo Beaulieu,
PCRD Director:
ljb@purdue.edu

Or

765-494-7273

February 2016